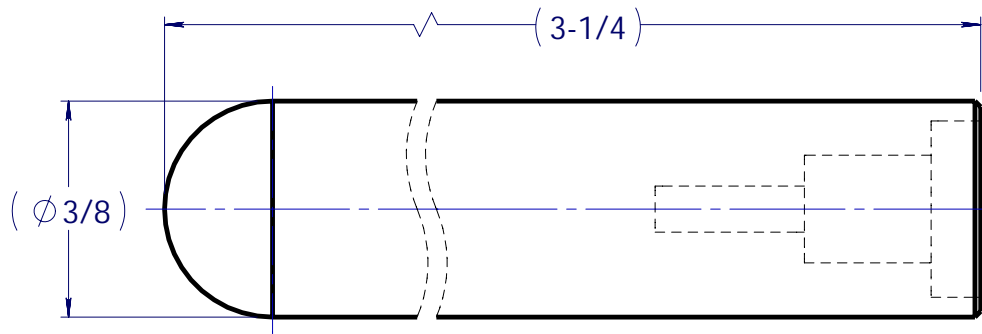
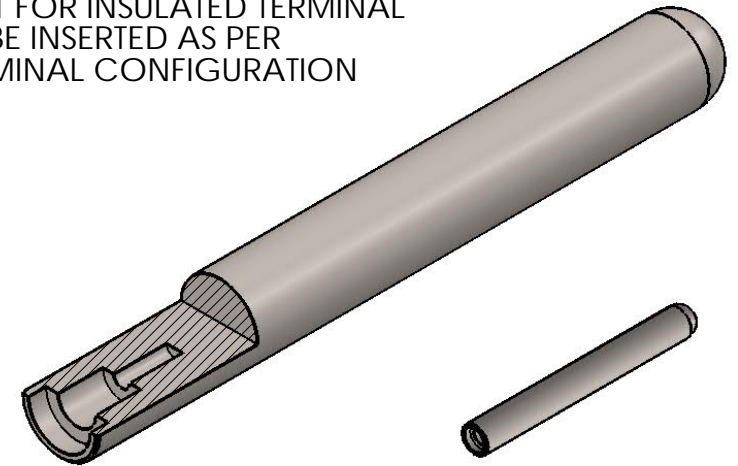


MATERIAL	REV.	DESCRIPTION	DATE	DR.	APVD.
OIL DRILL ROD	A	ISSUED NEW REV W/ SW	03/21/2019	YS	DS



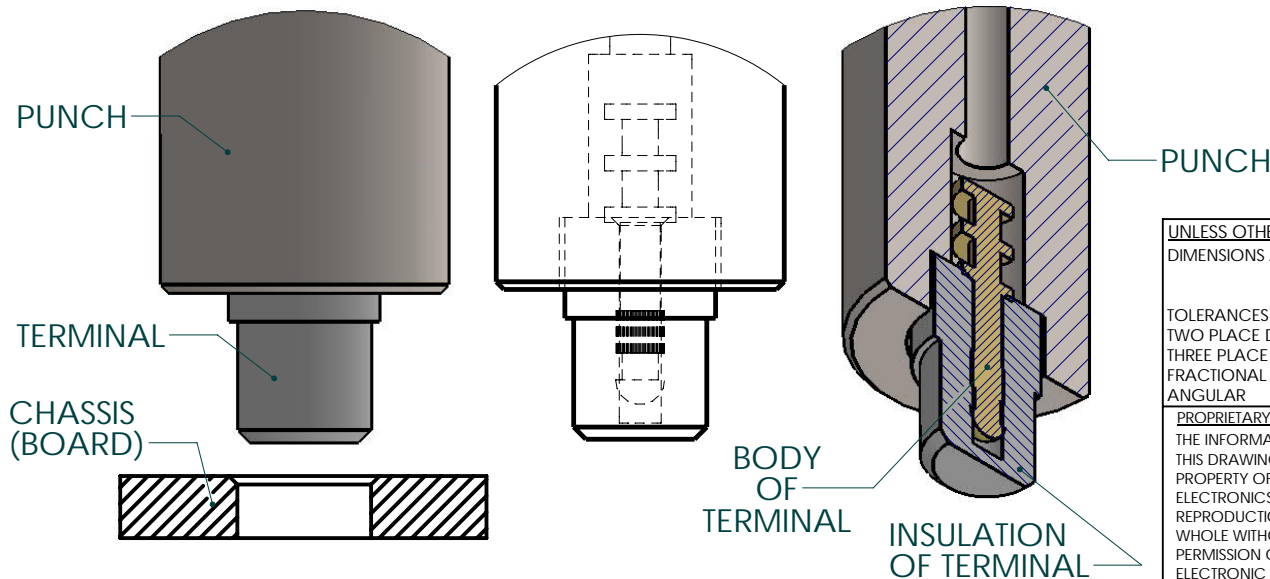
TTI
PRESS FIT PUNCH

SEAT FOR INSULATED TERMINAL
TO BE INSERTED AS PER
TERMINAL CONFIGURATION



INSTALLATION PROCEDURE

1. DRILL A HOLE IN THE CHASSIS WITH RECOMMENDED SIZE FOR CHOSEN TERMINAL PART NUMBER.
2. SIMPLY CENTER TERMINAL IN TOOL OVER CHASSIS HOLE AND WITH PRESSURE APPLIED. THE PRESS-FIT TERMINAL SLIPS INTO THE HOLE FOR A RIGHT, PERMANENT, TROUBLE FREE INSTALLATION.



UNLESS OTHERWISE SPECIFIED:
DIMENSIONS ARE IN INCHES

TOLERANCES:
TWO PLACE DECIMAL ±0.01
THREE PLACE DECIMAL ±0.010
FRACTIONAL ±1/64
ANGULAR ±5°

PROPRIETARY AND CONFIDENTIAL
THE INFORMATION CONTAINED IN
THIS DRAWING IS THE SOLE
PROPERTY OF CONCORD
ELECTRONICS INC. ANY
REPRODUCTION IN PART OR AS A
WHOLE WITHOUT THE WRITTEN
PERMISSION OF CONCORD
ELECTRONIC INC. IS PROHIBITED.

CONCORD ELECTRONICS, INC.

TITLE: GENERIC DRAWING OF
INSTALLATION TOOL FOR
PRESS FIT (TTI TYPE),
HAND OPERATED

DWG. NO. TTI REV A

WEIGHT: SCALE: NTS