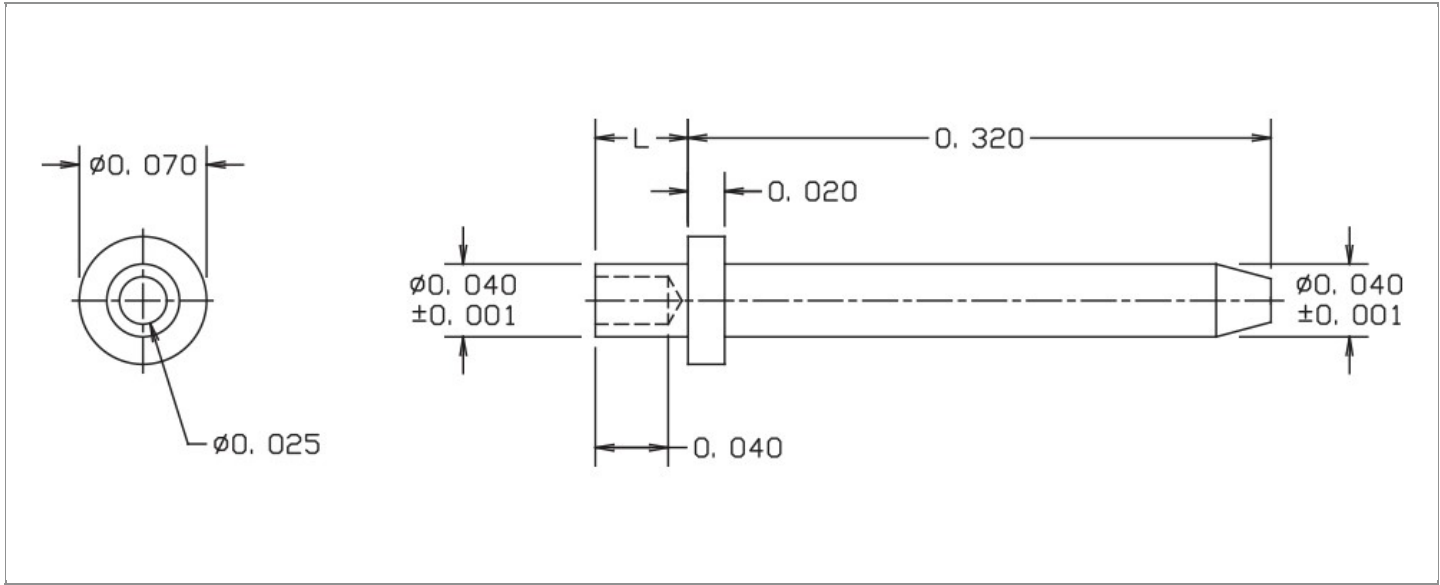


DRAWING NUMBER:	14-916-X-XX
PRODUCT GROUP:	TERMINALS
SUB-GROUP:	COMMERCIAL NON-INSULATED TERMINALS
DESCRIPTION:	NON-INSULATED PC PIN TERMINAL



BOARD / PANEL MOUNTING METHOD	MOUNTING HOLE SIZE	DRILL SIZE	FEED THRU COMBINATION
SWAGE MOUNT	$0.043" \pm 0.001$	#57	N/A

PART NO. STRUCTURE:

14-916	-	X	-	XX
PART SERIES		DIMENSION		FINISH

MATERIAL OPTIONS:

14-916-X-XX

COMPONENT	MATERIAL	MATERIAL AND SPECIFICATION
TERMINAL	LEADED RED BRASS	LEADED RED BRASS PER ASTM B140, ALLOY C31400, 1/2 HARD

DIMENSION OPTIONS:

14-916-X-XX

DIMENSION	A	D	PIN DIAMETER	OVERALL LENGTH	SHANK LENGTH (L)	BOARD/PANEL THICKNESS
1	N/A	N/A	$0.040" \pm 0.001$	0.371"	0.051"	1/32"
2	N/A	N/A	$0.040" \pm 0.001$	0.402"	0.082"	1/16"
3	N/A	N/A	$0.040" \pm 0.001$	0.433"	0.113"	3/32"

FINISH - PLATING OPTIONS:

14-916-X-**XX**

FINISH CODE	COMPONENT	FINISH	FINISH AND SPECIFICATION
01	TERMINAL	SILVER	0.000300"MIN. SILVER PER ASTM B700, TYPE 2, GRADE D WITH A NON-CHROMATE PRESERVATIVE TREATMENT
03	TERMINAL	GOLD	0.000010"MIN. GOLD PER ASTM B488, TYPE II, CODE C OVER 0.000050"MIN. NICKEL PER SAE-AMS-QQ-N-290
035	TERMINAL	GOLD	0.000050"MIN. GOLD PER ASTM B488, TYPE II, CODE C OVER 0.000050"MIN. NICKEL PER SAE-AMS-QQ-N-290
04	TERMINAL	ELECTRO-TIN	0.000300"MIN. ELECTRO-TIN PER ASTM B545 OVER 0.000100"MIN. COPPER PER SAE-AMS-2418
044	TERMINAL	BRIGHT ELECTRO-TIN	0.000300"MIN. BRIGHT ELECTRO-TIN PER ASTM B545 OVER 0.000100"MIN. COPPER PER SAE-AMS-2418
05	TERMINAL	ELECTRO-SOLDER	0.000300"MIN. ELECTRO-SOLDER PER SAE-AMS-P-81728 OVER 0.000100"MIN. COPPER PER SAE-AMS-2418
088	TERMINAL	BRIGHT TIN-LEAD	0.000300"MIN. BRIGHT TIN-LEAD (Sn93%-Pb7%) PER ASTM B545 OVER 0.000100"MIN. COPPER PER SAE-AMS-2418

TOLERANCES:*

DECIMAL	FRACTIONAL	ANGULAR	DRAWING ORIGATION DATE	LAST MODIFICATION DATE
± 0.003	N/A	± 5 °	2/15/1978	3/1/2017

*All dimensions are in inches.

RoHS COMPLIANCE:

14-916-1-XX

PART NUMBER	RoHS COMPLIANT
14-916-1-01	YES
14-916-1-03	YES
14-916-1-035	YES
14-916-1-04	YES
14-916-1-044	YES
14-916-1-05	NO
14-916-1-088	NO

14-916-2-XX

PART NUMBER	RoHS COMPLIANT
14-916-2-01	YES
14-916-2-03	YES
14-916-2-035	YES
14-916-2-04	YES
14-916-2-044	YES
14-916-2-05	NO
14-916-2-088	NO

14-916-3-XX

PART NUMBER	RoHS COMPLIANT
14-916-3-01	YES
14-916-3-03	YES
14-916-3-035	YES
14-916-3-04	YES
14-916-3-044	YES
14-916-3-05	NO
14-916-3-088	NO

TOOLING:

INSTALLATION TOOL: ARBOR PRESS	INSTALLATION TOOL: ANVIL (ARBOR PRESS OPERATED)	INSTALLATION TOOL: PRESS-FIT / ROLL SWAGE / RIVET PUNCH (ARBOR PRESS OPERATED)	INSTALLATION TOOL: FLARE SWAGE PUNCH (ARBOR PRESS OPERATED)
TM1	TA70-40-20	TP40-25	TFLP90-150

NOTES:

DATASHEET NOTES
N/A

Continued on next page...

NOTES CONTINUED:

INSTRUCTION NOTES

SEE GENERAL SWAGING INSTALLATION INSTRUCTION ON CONCORD ELECTRONICS' WEBSITE WWW.CONCORD-ELECTRONICS.COM.