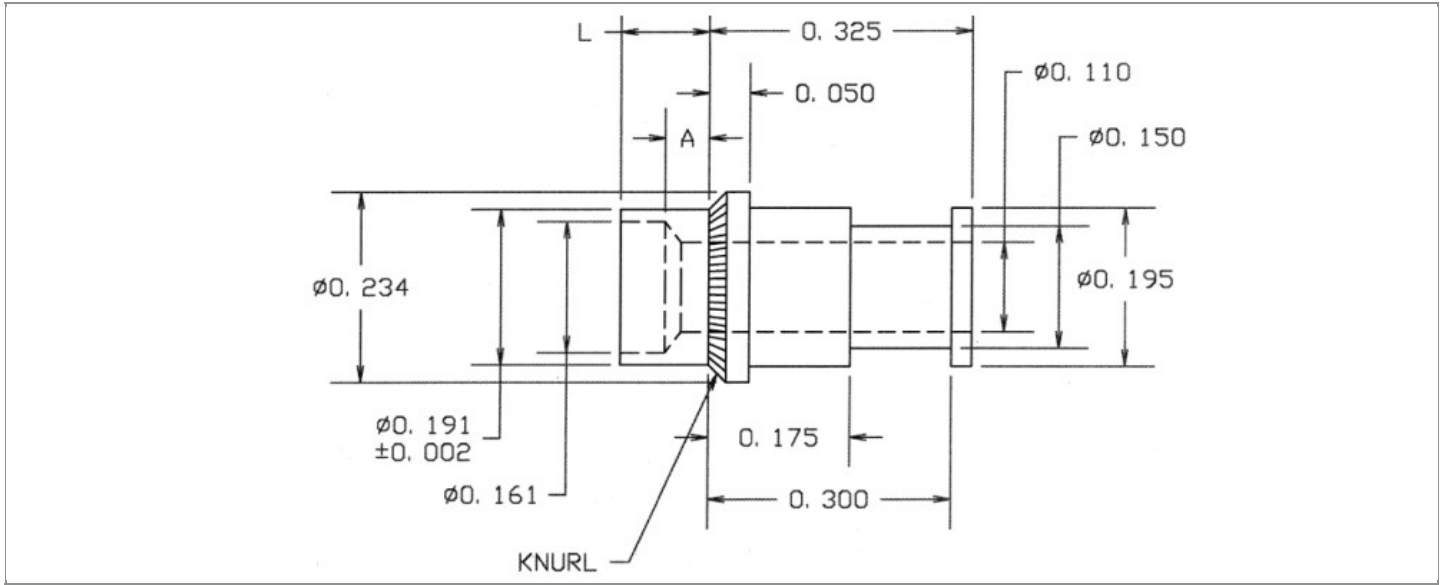


DRAWING NUMBER:	14-351-X-XX
PRODUCT GROUP:	TERMINALS
SUB-GROUP:	COMMERCIAL NON-INSULATED TERMINALS
DESCRIPTION:	NON-INSULATED THRU-HOLE KNURLED TURRET TERMINAL



BOARD / PANEL MOUNTING METHOD	MOUNTING HOLE SIZE	DRILL SIZE	FEED THRU COMBINATION
SWAGE MOUNT	0.196" ± 0.001	#9	N/A

PART NO. STRUCTURE:

14-351 - X - XX
 PART SERIES DIMENSION FINISH

MATERIAL OPTIONS:

14-351-X-XX

COMPONENT	MATERIAL	MATERIAL AND SPECIFICATION
TERMINAL	LEADED RED BRASS	LEADED RED BRASS PER ASTM B140, ALLOY C31400, 1/2 HARD

DIMENSION OPTIONS:

14-351-X-XX

DIMENSION	A	D	PIN DIAMETER	OVERALL LENGTH	SHANK LENGTH (L)	BOARD/PANEL THICKNESS
2	0.054"	N/A	N/A	0.434"	0.109"	1/16"
3	0.084"	N/A	N/A	0.460"	0.135"	3/32"
4	0.113"	N/A	N/A	0.497"	0.172"	1/8"
5	0.145"	N/A	N/A	0.520"	0.195"	5/32"
6	0.171"	N/A	N/A	0.555"	0.230"	3/16"

FINISH - PLATING OPTIONS:

14-351-X-XX

FINISH CODE	COMPONENT	FINISH	FINISH AND SPECIFICATION
01	TERMINAL	SILVER	0.000300"MIN. SILVER PER ASTM B700, TYPE 2, GRADE D WITH A NON-CHROMATE PRESERVATIVE TREATMENT
03	TERMINAL	GOLD	0.000010"MIN. GOLD PER ASTM B488, TYPE II, CODE C OVER 0.000050"MIN. NICKEL PER SAE-AMS-QQ-N-290
035	TERMINAL	GOLD	0.000050"MIN. GOLD PER ASTM B488, TYPE II, CODE C OVER 0.000050"MIN. NICKEL PER SAE-AMS-QQ-N-290
04	TERMINAL	ELECTRO-TIN	0.000300"MIN. ELECTRO-TIN PER ASTM B545 OVER 0.000100"MIN. COPPER PER SAE-AMS-2418
044	TERMINAL	BRIGHT ELECTRO-TIN	0.000300"MIN. BRIGHT ELECTRO-TIN PER ASTM B545 OVER 0.000100"MIN. COPPER PER SAE-AMS-2418
05	TERMINAL	ELECTRO-SOLDER	0.000300"MIN. ELECTRO-SOLDER PER SAE-AMS-P-81728 OVER 0.000100"MIN. COPPER PER SAE-AMS-2418
088	TERMINAL	BRIGHT TIN-LEAD	0.000300"MIN. BRIGHT TIN-LEAD (Sn93%-Pb7%) PER ASTM B545 OVER 0.000100"MIN. COPPER PER SAE-AMS-2418

TOLERANCES:*

DECIMAL	FRACTIONAL	ANGULAR	DRAWING ORIGATION DATE	LAST MODIFICATION DATE
± 0.005	± 1/64	± 1/64	2/3/1999	3/1/2017

*All dimensions are in inches.

RoHS COMPLIANCE:

14-351-2-XX

PART NUMBER	RoHS COMPLIANT
14-351-2-01	YES
14-351-2-03	YES
14-351-2-035	YES
14-351-2-04	YES
14-351-2-044	YES
14-351-2-05	NO
14-351-2-088	NO

14-351-3-XX

PART NUMBER	RoHS COMPLIANT
14-351-3-01	YES
14-351-3-03	YES
14-351-3-035	YES
14-351-3-04	YES
14-351-3-044	YES
14-351-3-05	NO
14-351-3-088	NO

14-351-4-XX

PART NUMBER	RoHS COMPLIANT
14-351-4-01	YES
14-351-4-03	YES
14-351-4-035	YES
14-351-4-04	YES
14-351-4-044	YES
14-351-4-05	NO
14-351-4-088	NO

Continued on next page...

RoHS COMPLIANCE CONTINUED:

14-351-5-XX

PART NUMBER	RoHS COMPLIANT
14-351-5-01	YES
14-351-5-03	YES
14-351-5-035	YES
14-351-5-04	YES
14-351-5-044	YES
14-351-5-05	NO
14-351-5-088	NO

14-351-6-XX

PART NUMBER	RoHS COMPLIANT
14-351-6-01	YES
14-351-6-03	YES
14-351-6-035	YES
14-351-6-04	YES
14-351-6-044	YES
14-351-6-05	NO
14-351-6-088	NO

TOOLING:

INSTALLATION TOOL: ARBOR PRESS	INSTALLATION TOOL: ANVIL (ARBOR PRESS OPERATED)	INSTALLATION TOOL: PRESS-FIT / ROLL SWAGE / RIVET PUNCH (ARBOR PRESS OPERATED)	INSTALLATION TOOL: FLARE SWAGE PUNCH (ARBOR PRESS OPERATED)
TM1	TA234-195-40	TP190-160	TFLP90-300

NOTES:

DATASHEET NOTES
N/A

INSTRUCTION NOTES
SEE GENERAL SWAGING INSTALLATION INSTRUCTION ON CONCORD ELECTRONICS' WEBSITE WWW.CONCORD-ELECTRONICS.COM .