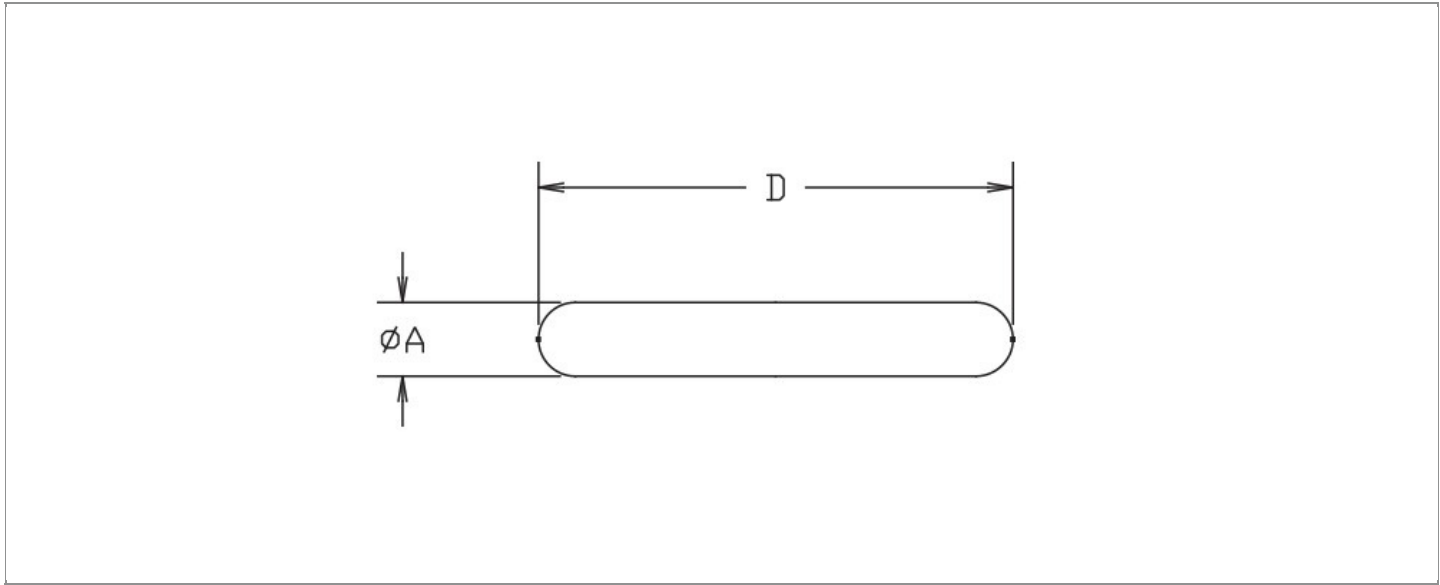


DRAWING NUMBER:	10-895-X-XX
PRODUCT GROUP:	TERMINALS
SUB-GROUP:	COMMERCIAL NON-INSULATED TERMINALS
DESCRIPTION:	NON-INSULATED PC PIN TERMINAL



BOARD / PANEL MOUNTING METHOD	MOUNTING HOLE SIZE	DRILL SIZE	FEED THRU COMBINATION
N/A	N/A	N/A	N/A

PART NO. STRUCTURE:

10-895 - X - XX
 PART SERIES DIMENSION FINISH

MATERIAL OPTIONS:

10-895-X-XX

COMPONENT	MATERIAL	MATERIAL AND SPECIFICATION
TERMINAL	BRASS	BRASS PER ASTM B16, ALLOY C36000, 1/2 HARD

DIMENSION OPTIONS:

10-895-X-XX

DIMENSION	A	D	PIN DIAMETER	OVERALL LENGTH	SHANK LENGTH (L)	BOARD/PANEL THICKNESS
1	0.020"	0.400"	0.020" ± 0.005	0.400"	N/A	N/A
2	0.020"	0.600"	0.020" ± 0.005	0.600"	N/A	N/A
3	0.020"	0.900"	0.020" ± 0.005	0.900"	N/A	N/A
4	0.032"	0.400"	0.032" ± 0.005	0.400"	N/A	N/A
5	0.032"	0.600"	0.032" ± 0.005	0.600"	N/A	N/A
6	0.032"	0.900"	0.032" ± 0.005	0.900"	N/A	N/A

Continued on next page...

DIMENSION OPTIONS CONTINUED:

10-895-X-XX

DIMENSION	A	D	PIN DIAMETER	OVERALL LENGTH	SHANK LENGTH (L)	BOARD/PANEL THICKNESS
7	0.040"	0.400"	0.040" ± 0.005	0.400"	N/A	N/A
8	0.040"	0.600"	0.040" ± 0.005	0.600"	N/A	N/A
9	0.040"	0.900"	0.040" ± 0.005	0.900"	N/A	N/A
10	0.062"	0.400"	0.062" ± 0.005	0.400"	N/A	N/A
11	0.062"	0.600"	0.062" ± 0.005	0.600"	N/A	N/A
12	0.062"	0.900"	0.062" ± 0.005	0.900"	N/A	N/A

FINISH - PLATING OPTIONS:

10-895-X-XX

FINISH CODE	COMPONENT	FINISH	FINISH AND SPECIFICATION
01	TERMINAL	SILVER	0.000300"MIN. SILVER PER ASTM B700, TYPE 2, GRADE D WITH A NON-CHROMATE PRESERVATIVE TREATMENT
02	TERMINAL	NICKEL	0.000100"MIN. NICKEL PER SAE-AMS-QQ-N-290
03	TERMINAL	GOLD	0.000010"MIN. GOLD PER ASTM B488, TYPE II, CODE C OVER 0.000100"MIN. NICKEL PER SAE-AMS-QQ-N-290
035	TERMINAL	GOLD	0.000050"MIN. GOLD PER ASTM B488, TYPE II, CODE C OVER 0.000100"MIN. NICKEL PER SAE-AMS-QQ-N-290
04	TERMINAL	ELECTRO-TIN	0.000300"MIN. ELECTRO-TIN PER ASTM B545 OVER 0.000100"MIN. COPPER PER SAE-AMS-2418
044	TERMINAL	BRIGHT ELECTRO-TIN	0.000300"MIN. BRIGHT ELECTRO-TIN PER ASTM B545 OVER 0.000100"MIN. COPPER PER SAE-AMS-2418
05	TERMINAL	ELECTRO-SOLDER	0.000300"MIN. ELECTRO-SOLDER PER SAE-AMS-P-81728 OVER 0.000100"MIN. COPPER PER SAE-AMS-2418
088	TERMINAL	BRIGHT TIN-LEAD	0.000300"MIN. BRIGHT TIN-LEAD (Sn93%-Pb7%) PER ASTM B545 OVER 0.000100"MIN. COPPER PER SAE-AMS-2418

TOLERANCES:*

DECIMAL	FRACTIONAL	ANGULAR	DRAWING ORIGATION DATE	LAST MODIFICATION DATE
± 0.005	± 1/64	± 5 °	6/29/2001	3/1/2017

*All dimensions are in inches.

RoHS COMPLIANCE:

10-895-1-XX

PART NUMBER	RoHS COMPLIANT
10-895-1-01	YES
10-895-1-02	YES
10-895-1-03	YES
10-895-1-035	YES
10-895-1-04	YES
10-895-1-044	YES
10-895-1-05	NO
10-895-1-088	NO

10-895-2-XX

PART NUMBER	RoHS COMPLIANT
10-895-2-01	YES
10-895-2-02	YES
10-895-2-03	YES
10-895-2-035	YES
10-895-2-04	YES
10-895-2-044	YES
10-895-2-05	NO
10-895-2-088	NO

10-895-3-XX

PART NUMBER	RoHS COMPLIANT
10-895-3-01	YES
10-895-3-02	YES
10-895-3-03	YES
10-895-3-035	YES
10-895-3-04	YES
10-895-3-044	YES
10-895-3-05	NO
10-895-3-088	NO

10-895-4-XX

PART NUMBER	RoHS COMPLIANT
10-895-4-01	YES
10-895-4-02	YES
10-895-4-03	YES
10-895-4-035	YES
10-895-4-04	YES
10-895-4-044	YES
10-895-4-05	NO
10-895-4-088	NO

10-895-5-XX

PART NUMBER	RoHS COMPLIANT
10-895-5-01	YES
10-895-5-02	YES
10-895-5-03	YES
10-895-5-035	YES
10-895-5-04	YES
10-895-5-044	YES
10-895-5-05	NO
10-895-5-088	NO

10-895-6-XX

PART NUMBER	RoHS COMPLIANT
10-895-6-01	YES
10-895-6-02	YES
10-895-6-03	YES
10-895-6-035	YES
10-895-6-04	YES
10-895-6-044	YES
10-895-6-05	NO
10-895-6-088	NO

10-895-7-XX

PART NUMBER	RoHS COMPLIANT
10-895-7-01	YES
10-895-7-02	YES
10-895-7-03	YES
10-895-7-035	YES
10-895-7-04	YES
10-895-7-044	YES
10-895-7-05	NO
10-895-7-088	NO

10-895-8-XX

PART NUMBER	RoHS COMPLIANT
10-895-8-01	YES
10-895-8-02	YES
10-895-8-03	YES
10-895-8-035	YES
10-895-8-04	YES
10-895-8-044	YES
10-895-8-05	NO
10-895-8-088	NO

10-895-9-XX

PART NUMBER	RoHS COMPLIANT
10-895-9-01	YES
10-895-9-02	YES
10-895-9-03	YES
10-895-9-035	YES
10-895-9-04	YES
10-895-9-044	YES
10-895-9-05	NO
10-895-9-088	NO

Continued on next page...

RoHS COMPLIANCE CONTINUED:

10-895-10-XX

PART NUMBER	RoHS COMPLIANT
10-895-10-01	YES
10-895-10-02	YES
10-895-10-03	YES
10-895-10-035	YES
10-895-10-04	YES
10-895-10-044	YES
10-895-10-05	NO
10-895-10-088	NO

10-895-11-XX

PART NUMBER	RoHS COMPLIANT
10-895-11-01	YES
10-895-11-02	YES
10-895-11-03	YES
10-895-11-035	YES
10-895-11-04	YES
10-895-11-044	YES
10-895-11-05	NO
10-895-11-088	NO

10-895-12-XX

PART NUMBER	RoHS COMPLIANT
10-895-12-01	YES
10-895-12-02	YES
10-895-12-03	YES
10-895-12-035	YES
10-895-12-04	YES
10-895-12-044	YES
10-895-12-05	NO
10-895-12-088	NO

TOOLING:

INSTALLATION TOOL: ARBOR PRESS	INSTALLATION TOOL: ANVIL (ARBOR PRESS OPERATED)	INSTALLATION TOOL: PRESS-FIT / ROLL SWAGE / RIVET PUNCH (ARBOR PRESS OPERATED)	INSTALLATION TOOL: FLARE SWAGE PUNCH (ARBOR PRESS OPERATED)
N/A	N/A	N/A	N/A

NOTES:

DATASHEET NOTES

N/A

INSTRUCTION NOTES

N/A