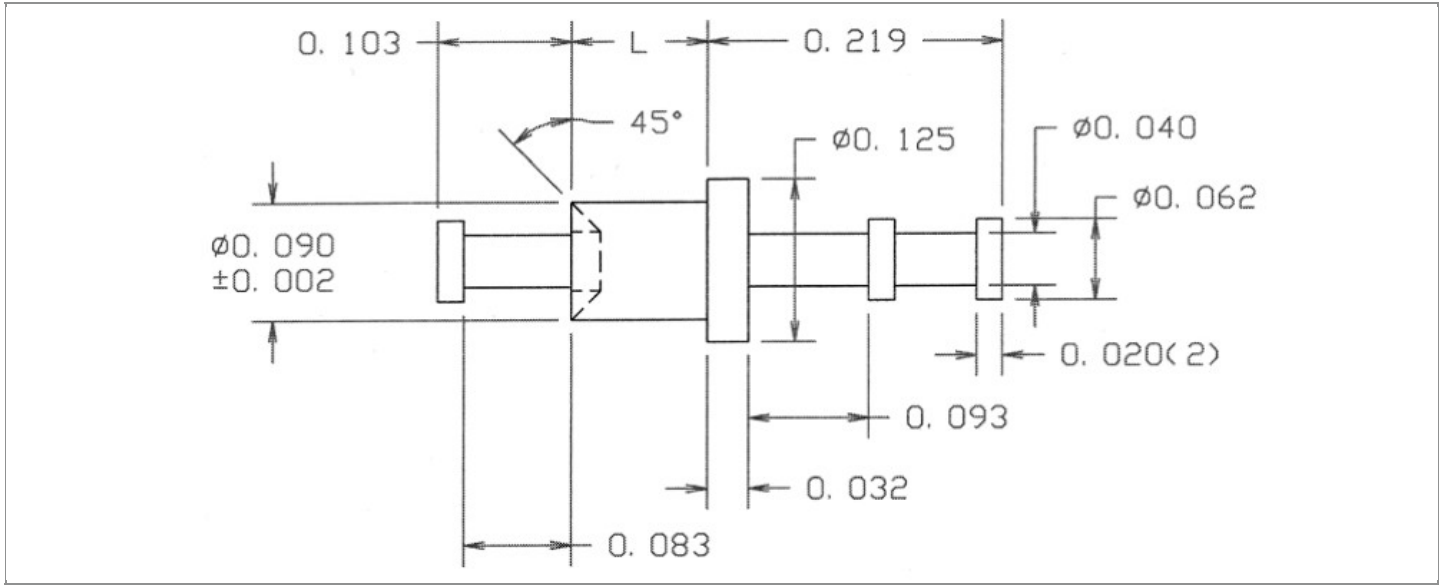


|                        |                                    |
|------------------------|------------------------------------|
| <b>DRAWING NUMBER:</b> | <b>10-554-X-XX</b>                 |
| <b>PRODUCT GROUP:</b>  | TERMINALS                          |
| <b>SUB-GROUP:</b>      | COMMERCIAL NON-INSULATED TERMINALS |
| <b>DESCRIPTION:</b>    | NON-INSULATED FEED THRU TERMINAL   |



| BOARD / PANEL MOUNTING METHOD | MOUNTING HOLE SIZE | DRILL SIZE | FEED THRU COMBINATION |
|-------------------------------|--------------------|------------|-----------------------|
| SWAGE MOUNT                   | 0.094" ± 0.001     | 3/32"      | TURRET/DOUBLE TURRET  |

**PART NO. STRUCTURE:**

|             |   |           |   |        |
|-------------|---|-----------|---|--------|
| 10-554      | - | X         | - | XX     |
| PART SERIES |   | DIMENSION |   | FINISH |

**MATERIAL OPTIONS:**

10-554-X-XX

| COMPONENT | MATERIAL | MATERIAL AND SPECIFICATION                 |
|-----------|----------|--------------------------------------------|
| TERMINAL  | BRASS    | BRASS PER ASTM B16, ALLOY C36000, 1/2 HARD |

**DIMENSION OPTIONS:**

10-554-X-XX

| DIMENSION | A   | D   | PIN DIAMETER | OVERALL LENGTH | SHANK LENGTH (L) | BOARD/PANEL THICKNESS |
|-----------|-----|-----|--------------|----------------|------------------|-----------------------|
| 1         | N/A | N/A | N/A          | 0.397"         | 0.075"           | 1/32"                 |
| 2         | N/A | N/A | N/A          | 0.427"         | 0.105"           | 1/16"                 |
| 3         | N/A | N/A | N/A          | 0.457"         | 0.135"           | 3/32"                 |
| 4         | N/A | N/A | N/A          | 0.487"         | 0.165"           | 1/8"                  |

FINISH - PLATING OPTIONS:

10-554-X-**XX**

| FINISH CODE | COMPONENT | FINISH             | FINISH AND SPECIFICATION                                                                             |
|-------------|-----------|--------------------|------------------------------------------------------------------------------------------------------|
| 01          | TERMINAL  | SILVER             | 0.000300"MIN. SILVER PER ASTM B700, TYPE 2, GRADE D WITH A NON-CHROMATE PRESERVATIVE TREATMENT       |
| 03          | TERMINAL  | GOLD               | 0.000010"MIN. GOLD PER ASTM B488, TYPE II, CODE C OVER 0.000050"MIN. NICKEL PER SAE-AMS-QQ-N-290     |
| 035         | TERMINAL  | GOLD               | 0.000050"MIN. GOLD PER ASTM B488, TYPE II, CODE C OVER 0.000050"MIN. NICKEL PER SAE-AMS-QQ-N-290     |
| 04          | TERMINAL  | ELECTRO-TIN        | 0.000300"MIN. ELECTRO-TIN PER ASTM B545 OVER 0.000100"MIN. COPPER PER SAE-AMS-2418                   |
| 044         | TERMINAL  | BRIGHT ELECTRO-TIN | 0.000300"MIN. BRIGHT ELECTRO-TIN PER ASTM B545 OVER 0.000100"MIN. COPPER PER SAE-AMS-2418            |
| 05          | TERMINAL  | ELECTRO-SOLDER     | 0.000300"MIN. ELECTRO-SOLDER PER SAE-AMS-P-81728 OVER 0.000100"MIN. COPPER PER SAE-AMS-2418          |
| 088         | TERMINAL  | BRIGHT TIN-LEAD    | 0.000300"MIN. BRIGHT TIN-LEAD (Sn93%-Pb7%) PER ASTM B545 OVER 0.000100"MIN. COPPER PER SAE-AMS-2418  |
| 095         | TERMINAL  | HOT SOLDER DIP     | 0.000100"MIN. HOT SOLDER DIP USING Sn60 PER IPC-J-STD-006 OVER 0.000100"MIN. COPPER PER SAE-AMS-2418 |

TOLERANCES:\*

| DECIMAL | FRACTIONAL | ANGULAR | DRAWING ORIGATION DATE | LAST MODIFICATION DATE |
|---------|------------|---------|------------------------|------------------------|
| ± 0.005 | ± 1/64     | ± 5 °   | 11/9/1999              | 3/1/2017               |

\*All dimensions are in inches.

RoHS COMPLIANCE:

10-554-1-XX

| PART NUMBER  | RoHS COMPLIANT |
|--------------|----------------|
| 10-554-1-01  | YES            |
| 10-554-1-03  | YES            |
| 10-554-1-035 | YES            |
| 10-554-1-04  | YES            |
| 10-554-1-044 | YES            |
| 10-554-1-05  | NO             |
| 10-554-1-088 | NO             |
| 10-554-1-095 | NO             |

10-554-2-XX

| PART NUMBER  | RoHS COMPLIANT |
|--------------|----------------|
| 10-554-2-01  | YES            |
| 10-554-2-03  | YES            |
| 10-554-2-035 | YES            |
| 10-554-2-04  | YES            |
| 10-554-2-044 | YES            |
| 10-554-2-05  | NO             |
| 10-554-2-088 | NO             |
| 10-554-2-095 | NO             |

10-554-3-XX

| PART NUMBER  | RoHS COMPLIANT |
|--------------|----------------|
| 10-554-3-01  | YES            |
| 10-554-3-03  | YES            |
| 10-554-3-035 | YES            |
| 10-554-3-04  | YES            |
| 10-554-3-044 | YES            |
| 10-554-3-05  | NO             |
| 10-554-3-088 | NO             |
| 10-554-3-095 | NO             |

Continued on next page...

RoHS COMPLIANCE CONTINUED:

10-554-4-XX

| PART NUMBER  | RoHS COMPLIANT |
|--------------|----------------|
| 10-554-4-01  | YES            |
| 10-554-4-03  | YES            |
| 10-554-4-035 | YES            |
| 10-554-4-04  | YES            |
| 10-554-4-044 | YES            |
| 10-554-4-05  | NO             |
| 10-554-4-088 | NO             |
| 10-554-4-095 | NO             |

TOOLING:

| INSTALLATION TOOL:<br>ARBOR PRESS | INSTALLATION TOOL:<br>ANVIL<br>(ARBOR PRESS OPERATED) | INSTALLATION TOOL:<br>PRESS-FIT / ROLL SWAGE / RIVET PUNCH<br>(ARBOR PRESS OPERATED) | INSTALLATION TOOL:<br>FLARE SWAGE PUNCH<br>(ARBOR PRESS OPERATED) |
|-----------------------------------|-------------------------------------------------------|--------------------------------------------------------------------------------------|-------------------------------------------------------------------|
| TM1                               | TA125-63-30                                           | TP92-T62                                                                             | N/A                                                               |

NOTES:

| DATASHEET NOTES |
|-----------------|
| N/A             |

| INSTRUCTION NOTES                                                                                                                                           |
|-------------------------------------------------------------------------------------------------------------------------------------------------------------|
| SEE GENERAL SWAGING INSTALLATION INSTRUCTION ON CONCORD ELECTRONICS' WEBSITE <a href="http://WWW.CONCORD-ELECTRONICS.COM">WWW.CONCORD-ELECTRONICS.COM</a> . |