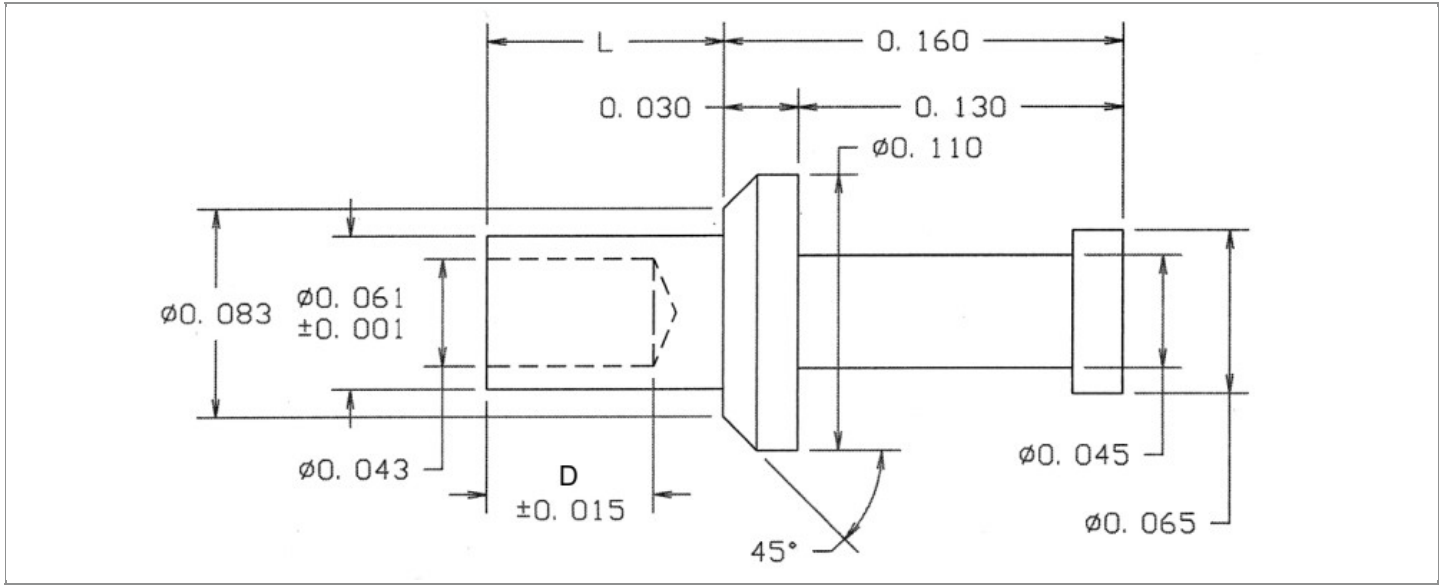


|                        |                                    |
|------------------------|------------------------------------|
| <b>DRAWING NUMBER:</b> | <b>09-7013-X-XX</b>                |
| <b>PRODUCT GROUP:</b>  | TERMINALS                          |
| <b>SUB-GROUP:</b>      | COMMERCIAL NON-INSULATED TERMINALS |
| <b>DESCRIPTION:</b>    | NON-INSULATED TURRET TERMINAL      |



| BOARD / PANEL MOUNTING METHOD | MOUNTING HOLE SIZE | DRILL SIZE | FEED THRU COMBINATION |
|-------------------------------|--------------------|------------|-----------------------|
| SWAGE MOUNT                   | 0.067" ± 0.001     | #51        | N/A                   |

**PART NO. STRUCTURE:**

|                |   |           |   |           |
|----------------|---|-----------|---|-----------|
| <b>09-7013</b> | - | <b>X</b>  | - | <b>XX</b> |
| PART SERIES    |   | DIMENSION |   | FINISH    |

**MATERIAL OPTIONS:**

**09-7013-X-XX**

| COMPONENT       | MATERIAL         | MATERIAL AND SPECIFICATION                             |
|-----------------|------------------|--|
| <b>TERMINAL</b> | LEADED RED BRASS | LEADED RED BRASS PER ASTM B140, ALLOY C31400, 1/2 HARD |

**DIMENSION OPTIONS:**

**09-7013-X-XX**

| DIMENSION | A   | D                | PIN DIAMETER | OVERALL LENGTH | SHANK LENGTH (L) | BOARD/PANEL THICKNESS |
|-----------|-----|------------------|--------------|----------------|------------------|-----------------------|
| <b>1</b>  | N/A | 0.050<br>±0.015" | N/A          | 0.222"         | 0.062"           | 1/32"                 |
| <b>2</b>  | N/A | 0.067<br>±0.015" | N/A          | 0.255"         | 0.095"           | 1/16"                 |
| <b>3</b>  | N/A | 0.067<br>±0.015" | N/A          | 0.285"         | 0.125"           | 3/32"                 |

Continued on next page...

DIMENSION OPTIONS CONTINUED:

09-7013-X-XX

| DIMENSION | A   | D                | PIN DIAMETER | OVERALL LENGTH | SHANK LENGTH (L) | BOARD/PANEL THICKNESS |
|-----------|-----|------------------|--------------|----------------|------------------|-----------------------|
| 4         | N/A | 0.067<br>±0.015" | N/A          | 0.310"         | 0.150"           | 1/8"                  |

FINISH - PLATING OPTIONS:

09-7013-X-XX

| FINISH CODE | COMPONENT | FINISH             | FINISH AND SPECIFICATION   |
|-------------|-----------|--------------------|--|
| 01          | TERMINAL  | SILVER             | 0.000300"MIN. SILVER PER ASTM B700, TYPE 2, GRADE D WITH A NON-CHROMATE PRESERVATIVE TREATMENT       |
| 03          | TERMINAL  | GOLD               | 0.000010"MIN. GOLD PER ASTM B488, TYPE II, CODE C OVER 0.000050"MIN. NICKEL PER SAE-AMS-QQ-N-290     |
| 035         | TERMINAL  | GOLD               | 0.000050"MIN. GOLD PER ASTM B488, TYPE II, CODE C OVER 0.000050"MIN. NICKEL PER SAE-AMS-QQ-N-290     |
| 04          | TERMINAL  | ELECTRO-TIN        | 0.000300"MIN. ELECTRO-TIN PER ASTM B545 OVER 0.000100"MIN. COPPER PER SAE-AMS-2418                   |
| 044         | TERMINAL  | BRIGHT ELECTRO-TIN | 0.000300"MIN. BRIGHT ELECTRO-TIN PER ASTM B545 OVER 0.000100"MIN. COPPER PER SAE-AMS-2418            |
| 05          | TERMINAL  | ELECTRO-SOLDER     | 0.000300"MIN. ELECTRO-SOLDER PER SAE-AMS-P-81728 OVER 0.000100"MIN. COPPER PER SAE-AMS-2418          |
| 088         | TERMINAL  | BRIGHT TIN-LEAD    | 0.000300"MIN. BRIGHT TIN-LEAD (Sn93%-Pb7%) PER ASTM B545 OVER 0.000100"MIN. COPPER PER SAE-AMS-2418  |
| 095         | TERMINAL  | HOT SOLDER DIP     | 0.000100"MIN. HOT SOLDER DIP USING Sn60 PER IPC-J-STD-006 OVER 0.000100"MIN. COPPER PER SAE-AMS-2418 |

TOLERANCES:\*

| DECIMAL | FRACTIONAL | ANGULAR | DRAWING ORIGATION DATE | LAST MODIFICATION DATE |
|---------|------------|---------|------------------------|------------------------|
| ± 0.005 | ± 1/64     | ± 5 °   | 2/15/2002              | 3/1/2017               |

\*All dimensions are in inches.

RoHS COMPLIANCE:

09-7013-1-XX

| PART NUMBER   | RoHS COMPLIANT |
|---------------|----------------|
| 09-7013-1-01  | YES            |
| 09-7013-1-03  | YES            |
| 09-7013-1-035 | YES            |
| 09-7013-1-04  | YES            |
| 09-7013-1-044 | YES            |
| 09-7013-1-05  | NO             |
| 09-7013-1-088 | NO             |
| 09-7013-1-095 | NO             |

09-7013-2-XX

| PART NUMBER   | RoHS COMPLIANT |
|---------------|----------------|
| 09-7013-2-01  | YES            |
| 09-7013-2-03  | YES            |
| 09-7013-2-035 | YES            |
| 09-7013-2-04  | YES            |
| 09-7013-2-044 | YES            |
| 09-7013-2-05  | NO             |
| 09-7013-2-088 | NO             |
| 09-7013-2-095 | NO             |

09-7013-3-XX

| PART NUMBER   | RoHS COMPLIANT |
|---------------|----------------|
| 09-7013-3-01  | YES            |
| 09-7013-3-03  | YES            |
| 09-7013-3-035 | YES            |
| 09-7013-3-04  | YES            |
| 09-7013-3-044 | YES            |
| 09-7013-3-05  | NO             |
| 09-7013-3-088 | NO             |
| 09-7013-3-095 | NO             |

Continued on next page...

RoHS COMPLIANCE CONTINUED:

09-7013-4-XX

| PART NUMBER   | RoHS COMPLIANT |
|---------------|----------------|
| 09-7013-4-01  | YES            |
| 09-7013-4-03  | YES            |
| 09-7013-4-035 | YES            |
| 09-7013-4-04  | YES            |
| 09-7013-4-044 | YES            |
| 09-7013-4-05  | NO             |
| 09-7013-4-088 | NO             |
| 09-7013-4-095 | NO             |

TOOLING:

| INSTALLATION TOOL:<br>ARBOR PRESS | INSTALLATION TOOL:<br>ANVIL<br>(ARBOR PRESS OPERATED) | INSTALLATION TOOL:<br>PRESS-FIT / ROLL SWAGE / RIVET PUNCH<br>(ARBOR PRESS OPERATED) | INSTALLATION TOOL:<br>FLARE SWAGE PUNCH<br>(ARBOR PRESS OPERATED) |
|-----------------------------------|---|--|---|
| TM1                               | TA110-65-30   | TP62-44  | TFLP90-150  |

NOTES:

| DATASHEET NOTES |
|-----------------|
|-----------------|

N/A

| INSTRUCTION NOTES |
|-------------------|
|-------------------|

SEE GENERAL SWAGING INSTALLATION INSTRUCTION ON CONCORD ELECTRONICS' WEBSITE [WWW.CONCORD-ELECTRONICS.COM](http://WWW.CONCORD-ELECTRONICS.COM).