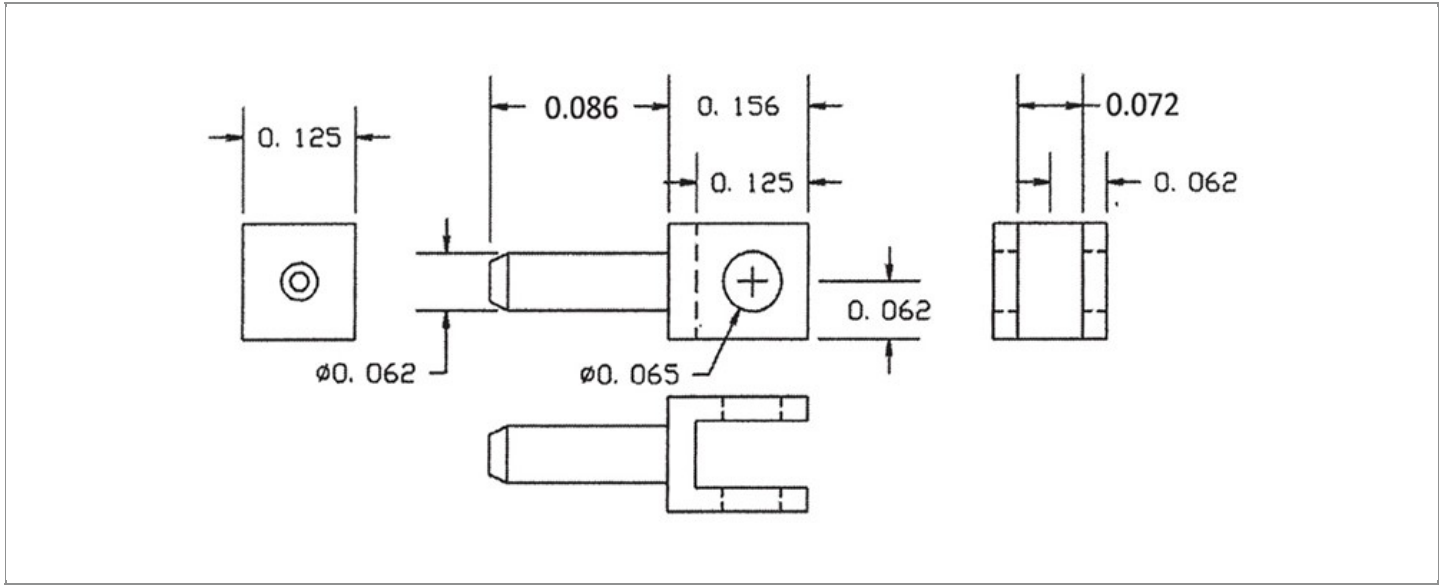


|                        |  |
|------------------------|--|
| <b>DRAWING NUMBER:</b> | <b>09-0375-X-XX</b>                              |
| <b>PRODUCT GROUP:</b>  | TERMINALS  |
| <b>SUB-GROUP:</b>      | COMMERCIAL NON-INSULATED TERMINALS               |
| <b>DESCRIPTION:</b>    | NON-INSULATED EDGE MOUNT SLOTTED PC PIN TERMINAL |



| BOARD / PANEL MOUNTING METHOD | MOUNTING HOLE SIZE     | DRILL SIZE | FEED THRU COMBINATION |
|-------------------------------|------------------------|------------|-----------------------|
| THREAD MOUNT (0-80 SCREW)     | CLEARANCE FOR #0 SCREW | #51        | N/A                   |

**PART NO. STRUCTURE:**

|                |   |           |   |           |
|----------------|---|-----------|---|-----------|
| <b>09-0375</b> | - | <b>2</b>  | - | <b>XX</b> |
| PART SERIES    |   | DIMENSION |   | FINISH    |

**MATERIAL OPTIONS:**

**09-0375-2-XX**

| COMPONENT | MATERIAL | MATERIAL AND SPECIFICATION                 |
|-----------|----------|--|
| TERMINAL  | BRASS    | BRASS PER ASTM B16, ALLOY C36000, 1/2 HARD |

**DIMENSION OPTIONS:**

**09-0375-2-XX**

| DIMENSION | A   | D   | PIN DIAMETER   | OVERALL LENGTH | SHANK LENGTH (L) | BOARD/PANEL THICKNESS |
|-----------|-----|-----|----------------|----------------|------------------|-----------------------|
| 2         | N/A | N/A | 0.062" ± 0.005 | 0.242"         | N/A              | 1/16"                 |

FINISH - PLATING OPTIONS:

09-0375-2-XX

| FINISH CODE | COMPONENT | FINISH             | FINISH AND SPECIFICATION  |
|-------------|-----------|--------------------|---|
| 01          | TERMINAL  | SILVER             | 0.000300"MIN. SILVER PER ASTM B700, TYPE 2, GRADE D WITH A NON-CHROMATE PRESERVATIVE TREATMENT      |
| 03          | TERMINAL  | GOLD               | 0.000010"MIN. GOLD PER ASTM B488, TYPE II, CODE C OVER 0.000100"MIN. NICKEL PER SAE-AMS-QQ-N-290    |
| 035         | TERMINAL  | GOLD               | 0.000050"MIN. GOLD PER ASTM B488, TYPE II, CODE C OVER 0.000100"MIN. NICKEL PER SAE-AMS-QQ-N-290    |
| 04          | TERMINAL  | ELECTRO-TIN        | 0.000300"MIN. ELECTRO-TIN PER ASTM B545 OVER 0.000100"MIN. COPPER PER SAE-AMS-2418                  |
| 044         | TERMINAL  | BRIGHT ELECTRO-TIN | 0.000300"MIN. BRIGHT ELECTRO-TIN PER ASTM B545 OVER 0.000100"MIN. COPPER PER SAE-AMS-2418           |
| 05          | TERMINAL  | ELECTRO-SOLDER     | 0.000300"MIN. ELECTRO-SOLDER PER SAE-AMS-P-81728 OVER 0.000100"MIN. COPPER PER SAE-AMS-2418         |
| 088         | TERMINAL  | BRIGHT TIN-LEAD    | 0.000300"MIN. BRIGHT TIN-LEAD (Sn93%-Pb7%) PER ASTM B545 OVER 0.000100"MIN. COPPER PER SAE-AMS-2418 |

TOLERANCES:\*

| DECIMAL | FRACTIONAL | ANGULAR | DRAWING ORIGATION DATE | LAST MODIFICATION DATE |
|---------|------------|---------|------------------------|------------------------|
| ± 0.005 | ± 1/64     | ± 5 °   | 6/28/2012              | 3/1/2017               |

\*All dimensions are in inches.

RoHS COMPLIANCE:

09-0375-2-XX

| PART NUMBER   | RoHS COMPLIANT |
|---------------|----------------|
| 09-0375-2-01  | YES            |
| 09-0375-2-03  | YES            |
| 09-0375-2-035 | YES            |
| 09-0375-2-04  | YES            |
| 09-0375-2-044 | YES            |
| 09-0375-2-05  | NO             |
| 09-0375-2-088 | NO             |

TOOLING:

| INSTALLATION TOOL:<br>ARBOR PRESS | INSTALLATION TOOL:<br>ANVIL<br>(ARBOR PRESS OPERATED) | INSTALLATION TOOL:<br>PRESS-FIT / ROLL SWAGE / RIVET PUNCH<br>(ARBOR PRESS OPERATED) | INSTALLATION TOOL:<br>FLARE SWAGE PUNCH<br>(ARBOR PRESS OPERATED) |
|-----------------------------------|---|--|---|
| N/A                               | N/A   | N/A  | N/A   |

NOTES:

| DATASHEET NOTES |
|-----------------|
| N/A             |

Continued on next page...

**NOTES** CONTINUED:

---

| INSTRUCTION NOTES |
|-------------------|
| N/A               |

---