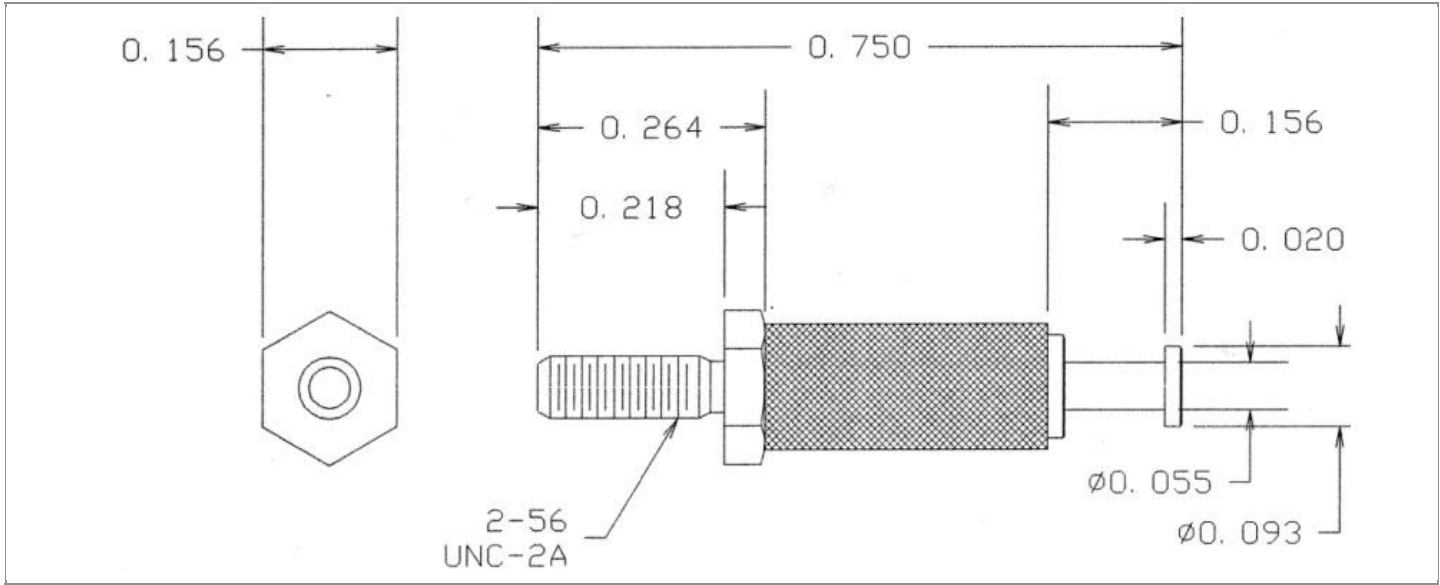


DRAWING NUMBER:	1127-69M-XXXXZ
PRODUCT GROUP:	TERMINALS
SUB-GROUP:	MILITARY INSULATED TERMINALS
DESCRIPTION:	DIALLYL PHTHALATE INSULATED TURRET TERMINAL



PIN DIAMETER	OVERALL LENGTH	MOUNTING ORIENTATION	BOARD / PANEL MOUNTING METHOD
N/A	0.750"	VERTICAL	THREAD MOUNT (2-56 NUT)
BOARD / PANEL THICKNESS	MOUNTING HOLE SIZE	DRILL SIZE	FEED THRU COMBINATION
UP TO 3/32"	0.094" ± 0.002	3/32"	N/A

PART NO. STRUCTURE:*

1127 - 69M - XX XX
 PART SERIES DIMENSION FINISH INSULATION COLOR

*If applicable, "Z" at the end of a PART NO. STRUCTURE indicates TERMINAL MATERIAL TYPE.

MATERIAL OPTIONS:

1127-69M-XXXXZ

COMPONENT	MATERIAL	MATERIAL AND SPECIFICATION
TERMINAL	PHOSPHOR BRONZE	PHOSPHOR BRONZE PER ASTM B139, ALLOY C54400
BASE/METAL SLEEVE	BRASS	BRASS PER ASTM B16, ALLOY C36000, 1/2 HARD
INSULATION*	DIALLYL PHTHALATE	MOLDED DIALLYL PHTHALATE, TYPE SDG-F PER ASTM D5948
NUT	BRASS	BRASS PER ASTM B16, ALLOY C36000, 1/2 HARD
WASHER	PHOSPHOR BRONZE	PHOSPHOR BRONZE PER MS35333

*For Insulation color, please see INSULATION COLOR OPTIONS on Page 2

FINISH - PLATING OPTIONS:

1127-69M-XX~~XX~~Z

FINISH CODE	COMPONENT	FINISH	FINISH AND SPECIFICATION
05	TERMINAL	ELECTRO-SOLDER	0.000300"MIN. ELECTRO-SOLDER PER SAE-AMS-P-81728 OVER 0.000100"MIN. COPPER PER SAE-AMS-2418
	BASE/METAL SLEEVE	ELECTRO-SOLDER	0.000100"MIN. ELECTRO-SOLDER PER SAE-AMS-P-81728 OVER 0.000100"MIN. NICKEL PER SAE-AMS-QQ-N-290
	NUT	NICKEL	0.000100"MIN. NICKEL PER SAE-AMS-QQ-N-290
	WASHER	NICKEL	0.000100"MIN. NICKEL PER SAE-AMS-QQ-N-290
088	TERMINAL	BRIGHT TIN-LEAD	0.000300"MIN. BRIGHT TIN-LEAD (Sn93%-Pb7%) PER ASTM B545 OVER 0.000100"MIN. COPPER PER SAE-AMS-2418
	BASE/METAL SLEEVE	BRIGHT TIN-LEAD	0.000100"MIN. BRIGHT TIN-LEAD (Sn93%-Pb7%) PER ASTM B545 OVER 0.000100"MIN. NICKEL PER SAE-AMS-QQ-N-290
	NUT	NICKEL	0.000100"MIN. NICKEL PER SAE-AMS-QQ-N-290
	WASHER	NICKEL	0.000100"MIN. NICKEL PER SAE-AMS-QQ-N-290
095	TERMINAL	HOT SOLDER DIP	0.000100"MIN. HOT SOLDER DIP USING Sn60 PER IPC-J-STD-006 OVER 0.000100"MIN. COPPER PER SAE-AMS-2418
	BASE/METAL SLEEVE	BRIGHT TIN-LEAD	0.000100"MIN. BRIGHT TIN-LEAD (Sn93%-Pb7%) PER ASTM B545 OVER 0.000100"MIN. NICKEL PER SAE-AMS-QQ-N-290
	NUT	NICKEL	0.000100"MIN. NICKEL PER SAE-AMS-QQ-N-290
	WASHER	NICKEL	0.000100"MIN. NICKEL PER SAE-AMS-QQ-N-290

INSULATION COLOR OPTIONS:

1127-69M-XX~~XX~~Z

INSULATION COLOR	BLACK	BLUE	BROWN	GRAY	GREEN	ORANGE	RED	VIOLET	WHITE	YELLOW
COLOR CODE NO.	10	16	11	18	15	13	12	17	19	14

TOLERANCES:*

DECIMAL	FRACTIONAL	ANGULAR	DRAWING ORIGATION DATE	LAST MODIFICATION DATE
± 0.015	N/A	N/A	4/3/1998	3/1/2017

*All dimensions are in inches.

RoHS COMPLIANCE:

1127-69M-05XXZ

PART NUMBER	RoHS COMPLIANT
1127-69M-0510Z	NO
1127-69M-0511Z	NO
1127-69M-0512Z	NO
1127-69M-0513Z	NO
1127-69M-0514Z	NO
1127-69M-0515Z	NO
1127-69M-0516Z	NO
1127-69M-0517Z	NO
1127-69M-0518Z	NO
1127-69M-0519Z	NO

1127-69M-088XXZ

PART NUMBER	RoHS COMPLIANT
1127-69M-08810Z	NO
1127-69M-08811Z	NO
1127-69M-08812Z	NO
1127-69M-08813Z	NO
1127-69M-08814Z	NO
1127-69M-08815Z	NO
1127-69M-08816Z	NO
1127-69M-08817Z	NO
1127-69M-08818Z	NO
1127-69M-08819Z	NO

1127-69M-095XXZ

PART NUMBER	RoHS COMPLIANT
1127-69M-09510Z	NO
1127-69M-09511Z	NO
1127-69M-09512Z	NO
1127-69M-09513Z	NO
1127-69M-09514Z	NO
1127-69M-09515Z	NO
1127-69M-09516Z	NO
1127-69M-09517Z	NO
1127-69M-09518Z	NO
1127-69M-09519Z	NO

MILITARY REFERENCE SPECIFICATIONS:

1127-69M-05XXZ

PART NUMBER	MIL SPECIFICATION	MIL PART NUMBER	COMMERCIAL ITEM DESCRIPTION (CID) SPECIFICATION	CID PART NUMBER
1127-69M-0510Z	MIL-T-55155/18	M55155/180B02 (SE180E02Z)	A-A-59126/18	AA59126/180B02
1127-69M-0511Z	MIL-T-55155/18	M55155/181B02 (SE181E02Z)	A-A-59126/18	AA59126/181B02
1127-69M-0512Z	MIL-T-55155/18	M55155/182B02 (SE182E02Z)	A-A-59126/18	AA59126/182B02
1127-69M-0513Z	MIL-T-55155/18	M55155/183B02 (SE183E02Z)	A-A-59126/18	AA59126/183B02
1127-69M-0514Z	MIL-T-55155/18	M55155/184B02 (SE184E02Z)	A-A-59126/18	AA59126/184B02
1127-69M-0515Z	MIL-T-55155/18	M55155/185B02 (SE185E02Z)	A-A-59126/18	AA59126/185B02
1127-69M-0516Z	MIL-T-55155/18	M55155/186B02 (SE186E02Z)	A-A-59126/18	AA59126/186B02
1127-69M-0517Z	MIL-T-55155/18	M55155/187B02 (SE187E02Z)	A-A-59126/18	AA59126/187B02
1127-69M-0518Z	MIL-T-55155/18	M55155/188B02 (SE188E02Z)	A-A-59126/18	AA59126/188B02
1127-69M-0519Z	MIL-T-55155/18	M55155/189B02 (SE189E02Z)	A-A-59126/18	AA59126/189B02

1127-69M-088XXZ

PART NUMBER	MIL SPECIFICATION	MIL PART NUMBER	COMMERCIAL ITEM DESCRIPTION (CID) SPECIFICATION	CID PART NUMBER
1127-69M-08810Z	MIL-T-55155/18	M55155/180D02	A-A-59126/18	AA59126/180D02
1127-69M-08811Z	MIL-T-55155/18	M55155/181D02	A-A-59126/18	AA59126/181D02
1127-69M-08812Z	MIL-T-55155/18	M55155/182D02	A-A-59126/18	AA59126/182D02
1127-69M-08813Z	MIL-T-55155/18	M55155/183D02	A-A-59126/18	AA59126/183D02
1127-69M-08814Z	MIL-T-55155/18	M55155/184D02	A-A-59126/18	AA59126/184D02

Continued on next page...

MILITARY REFERENCE SPECIFICATIONS CONTINUED:

1127-69M-088XXZ

PART NUMBER	MIL SPECIFICATION	MIL PART NUMBER	COMMERCIAL ITEM DESCRIPTION (CID) SPECIFICATION	CID PART NUMBER
1127-69M-08815Z	MIL-T-55155/18	M55155/185D02	A-A-59126/18	AA59126/185D02
1127-69M-08816Z	MIL-T-55155/18	M55155/186D02	A-A-59126/18	AA59126/186D02
1127-69M-08817Z	MIL-T-55155/18	M55155/187D02	A-A-59126/18	AA59126/187D02
1127-69M-08818Z	MIL-T-55155/18	M55155/188D02	A-A-59126/18	AA59126/188D02
1127-69M-08819Z	MIL-T-55155/18	M55155/189D02	A-A-59126/18	AA59126/189D02

1127-69M-095XXZ

PART NUMBER	MIL SPECIFICATION	MIL PART NUMBER	COMMERCIAL ITEM DESCRIPTION (CID) SPECIFICATION	CID PART NUMBER
1127-69M-09510Z	MIL-T-55155/18	M55155/180C02	A-A-59126/18	AA59126/180C02
1127-69M-09511Z	MIL-T-55155/18	M55155/181C02	A-A-59126/18	AA59126/181C02
1127-69M-09512Z	MIL-T-55155/18	M55155/182C02	A-A-59126/18	AA59126/182C02
1127-69M-09513Z	MIL-T-55155/18	M55155/183C02	A-A-59126/18	AA59126/183C02
1127-69M-09514Z	MIL-T-55155/18	M55155/184C02	A-A-59126/18	AA59126/184C02
1127-69M-09515Z	MIL-T-55155/18	M55155/185C02	A-A-59126/18	AA59126/185C02
1127-69M-09516Z	MIL-T-55155/18	M55155/186C02	A-A-59126/18	AA59126/186C02
1127-69M-09517Z	MIL-T-55155/18	M55155/187C02	A-A-59126/18	AA59126/187C02
1127-69M-09518Z	MIL-T-55155/18	M55155/188C02	A-A-59126/18	AA59126/188C02
1127-69M-09519Z	MIL-T-55155/18	M55155/189C02	A-A-59126/18	AA59126/189C02

TOOLING:

INSTALLATION TOOL: ARBOR PRESS	INSTALLATION TOOL: ANVIL (ARBOR PRESS OPERATED)	INSTALLATION TOOL: PRESS-FIT / ROLL SWAGE / RIVET PUNCH (ARBOR PRESS OPERATED)	INSTALLATION TOOL: PRESS-FIT (HAND OPERATED)
N/A	N/A	N/A	N/A

NOTES:

DATASHEET NOTES

NUT PART NO.: 701-7312-02, WASHER PART NO.: 701-7701-02.

INSTRUCTION NOTES

SUPPLIED WITH NICKEL PLATED BRASS HEX NUT (2-56 x 3/16" x 1/16") AND NICKEL PLATED PHOSPHOR BRONZE #2 INTERNAL TOOTH LOCKWASHER.