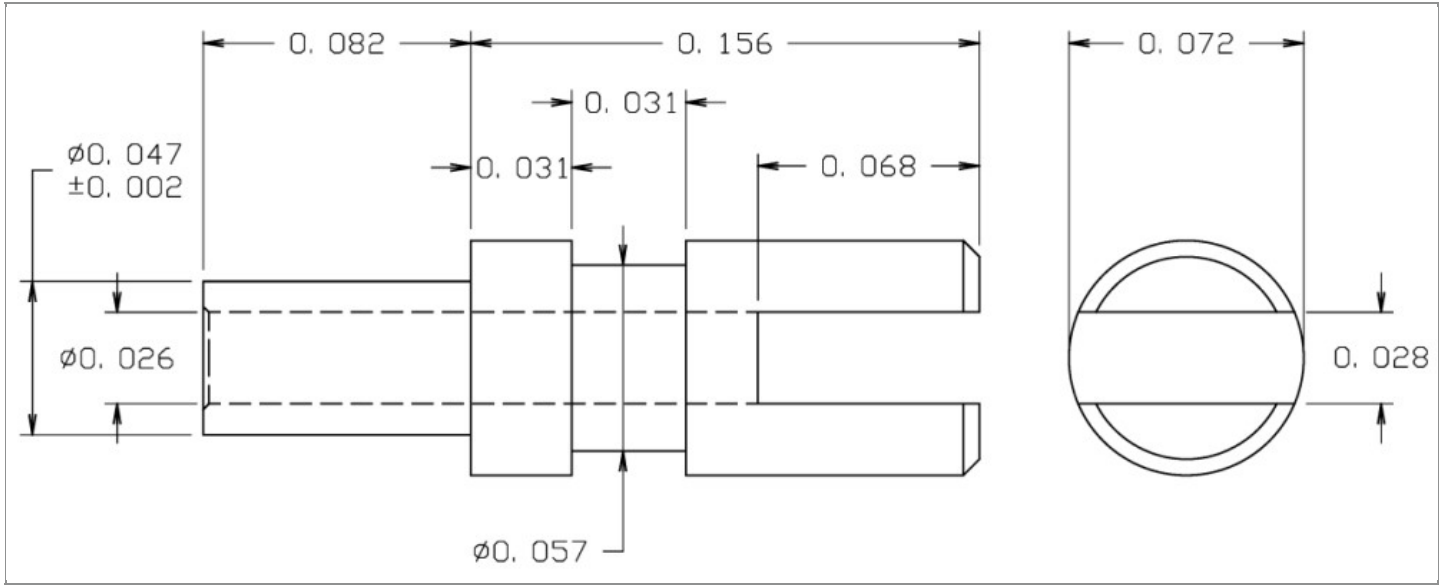


DRAWING NUMBER:	14-414-X-XX
PRODUCT GROUP:	TERMINALS
SUB-GROUP:	COMMERCIAL NON-INSULATED TERMINALS
DESCRIPTION:	NON-INSULATED THRU-HOLE SLOTTED TERMINAL



BOARD / PANEL MOUNTING METHOD	MOUNTING HOLE SIZE	DRILL SIZE	FEED THRU COMBINATION
SWAGE MOUNT	0.052" ± 0.001	#55	N/A

PART NO. STRUCTURE:

14-414 - X - XX
 PART SERIES DIMENSION FINISH

MATERIAL OPTIONS:

14-414-X-XX

COMPONENT	MATERIAL	MATERIAL AND SPECIFICATION
TERMINAL	LEADED RED BRASS	LEADED RED BRASS PER ASTM B140, ALLOY C31400, 1/2 HARD

DIMENSION OPTIONS:

14-414-X-XX

DIMENSION	A	D	PIN DIAMETER	OVERALL LENGTH	SHANK LENGTH (L)	BOARD/PANEL THICKNESS
1	N/A	N/A	N/A	0.208"	0.051"	1/32"
2A	N/A	N/A	N/A	0.250"	0.094"	1/16"
2	N/A	N/A	N/A	0.239"	0.082"	1/16"
3	N/A	N/A	N/A	0.270"	0.113"	3/32"
4	N/A	N/A	N/A	0.302"	0.145"	1/8"
6	N/A	N/A	N/A	0.364"	0.207"	3/16"

Continued on next page...

DIMENSION OPTIONS CONTINUED:

14-414-X-XX

DIMENSION	A	D	PIN DIAMETER	OVERALL LENGTH	SHANK LENGTH (L)	BOARD/PANEL THICKNESS
8	N/A	N/A	N/A	0.427"	0.270"	1/4"
11	N/A	N/A	N/A	0.192"	0.035"	1/64"

FINISH - PLATING OPTIONS:

14-414-X-XX

FINISH CODE	COMPONENT	FINISH	FINISH AND SPECIFICATION
01	TERMINAL	SILVER	0.000300"MIN. SILVER PER ASTM B700, TYPE 2, GRADE D WITH A NON-CHROMATE PRESERVATIVE TREATMENT
03	TERMINAL	GOLD	0.000010"MIN. GOLD PER ASTM B488, TYPE II, CODE C OVER 0.000050"MIN. NICKEL PER SAE-AMS-QQ-N-290
035	TERMINAL	GOLD	0.000050"MIN. GOLD PER ASTM B488, TYPE II, CODE C OVER 0.000050"MIN. NICKEL PER SAE-AMS-QQ-N-290
04	TERMINAL	ELECTRO-TIN	0.000300"MIN. ELECTRO-TIN PER ASTM B545 OVER 0.000100"MIN. COPPER PER SAE-AMS-2418
044	TERMINAL	BRIGHT ELECTRO-TIN	0.000300"MIN. BRIGHT ELECTRO-TIN PER ASTM B545 OVER 0.000100"MIN. COPPER PER SAE-AMS-2418
05	TERMINAL	ELECTRO-SOLDER	0.000300"MIN. ELECTRO-SOLDER PER SAE-AMS-P-81728 OVER 0.000100"MIN. COPPER PER SAE-AMS-2418
088	TERMINAL	BRIGHT TIN-LEAD	0.000300"MIN. BRIGHT TIN-LEAD (Sn93%-Pb7%) PER ASTM B545 OVER 0.000100"MIN. COPPER PER SAE-AMS-2418

TOLERANCES:*

DECIMAL	FRACTIONAL	ANGULAR	DRAWING ORIGATION DATE	LAST MODIFICATION DATE
± 0.005	± 1/64	± 5 °	11/9/2006	3/1/2017

*All dimensions are in inches.

RoHS COMPLIANCE:

14-414-1-XX

PART NUMBER	RoHS COMPLIANT
14-414-1-01	YES
14-414-1-03	YES
14-414-1-035	YES
14-414-1-04	YES
14-414-1-044	YES
14-414-1-05	NO
14-414-1-088	NO

14-414-2A-XX

PART NUMBER	RoHS COMPLIANT
14-414-2A-01	YES
14-414-2A-03	YES
14-414-2A-035	YES
14-414-2A-04	YES
14-414-2A-044	YES
14-414-2A-05	NO
14-414-2A-088	NO

14-414-2-XX

PART NUMBER	RoHS COMPLIANT
14-414-2-01	YES
14-414-2-03	YES
14-414-2-035	YES
14-414-2-04	YES
14-414-2-044	YES
14-414-2-05	NO
14-414-2-088	NO

Continued on next page...

RoHS COMPLIANCE CONTINUED:

14-414-3-XX

PART NUMBER	RoHS COMPLIANT
14-414-3-01	YES
14-414-3-03	YES
14-414-3-035	YES
14-414-3-04	YES
14-414-3-044	YES
14-414-3-05	NO
14-414-3-088	NO

14-414-4-XX

PART NUMBER	RoHS COMPLIANT
14-414-4-01	YES
14-414-4-03	YES
14-414-4-035	YES
14-414-4-04	YES
14-414-4-044	YES
14-414-4-05	NO
14-414-4-088	NO

14-414-6-XX

PART NUMBER	RoHS COMPLIANT
14-414-6-01	YES
14-414-6-03	YES
14-414-6-035	YES
14-414-6-04	YES
14-414-6-044	YES
14-414-6-05	NO
14-414-6-088	NO

14-414-8-XX

PART NUMBER	RoHS COMPLIANT
14-414-8-01	YES
14-414-8-03	YES
14-414-8-035	YES
14-414-8-04	YES
14-414-8-044	YES
14-414-8-05	NO
14-414-8-088	NO

14-414-11-XX

PART NUMBER	RoHS COMPLIANT
14-414-11-01	YES
14-414-11-03	YES
14-414-11-035	YES
14-414-11-04	YES
14-414-11-044	YES
14-414-11-05	NO
14-414-11-088	NO

TOOLING:

INSTALLATION TOOL: ARBOR PRESS	INSTALLATION TOOL: ANVIL (ARBOR PRESS OPERATED)	INSTALLATION TOOL: PRESS-FIT / ROLL SWAGE / RIVET PUNCH (ARBOR PRESS OPERATED)	INSTALLATION TOOL: FLARE SWAGE PUNCH (ARBOR PRESS OPERATED)
TM1	TA10-414	TP47-26	TFLP90-150

NOTES:

DATASHEET NOTES
N/A

INSTRUCTION NOTES
SEE GENERAL SWAGING INSTALLATION INSTRUCTION ON CONCORD ELECTRONICS' WEBSITE WWW.CONCORD-ELECTRONICS.COM .