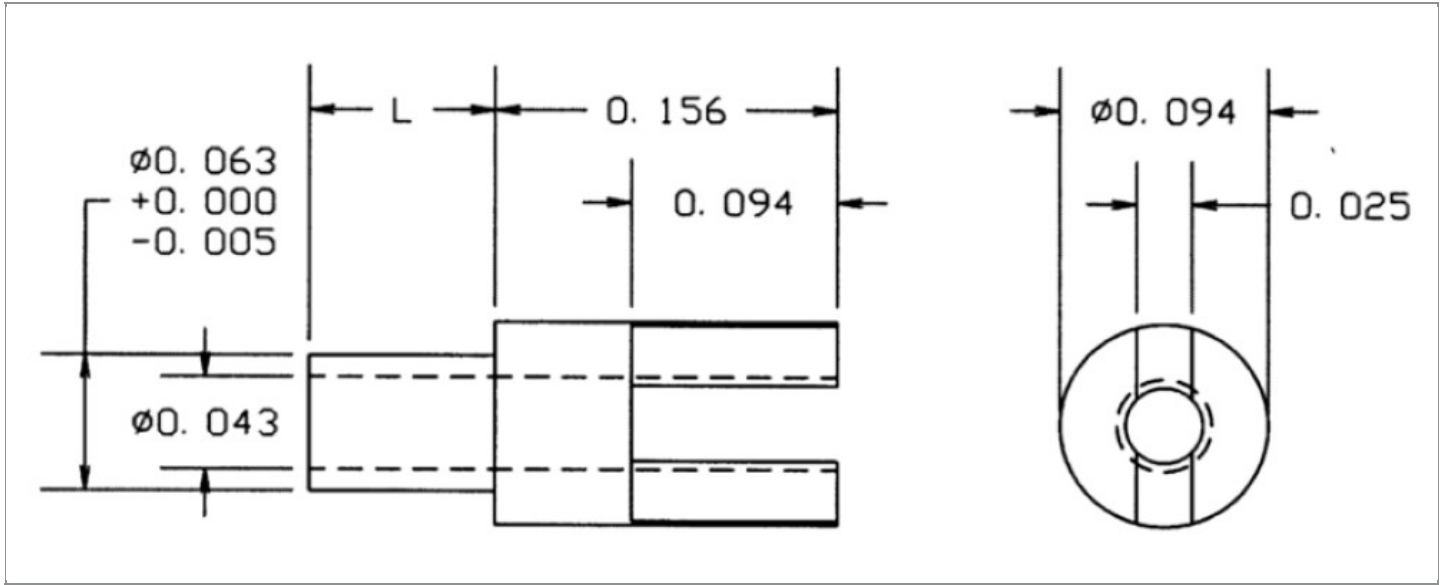


|                        |  |
|------------------------|--|
| <b>DRAWING NUMBER:</b> | <b>10-471-X-XX</b>                       |
| <b>PRODUCT GROUP:</b>  | TERMINALS                                |
| <b>SUB-GROUP:</b>      | COMMERCIAL NON-INSULATED TERMINALS       |
| <b>DESCRIPTION:</b>    | NON-INSULATED THRU-HOLE SLOTTED TERMINAL |



| BOARD / PANEL MOUNTING METHOD | MOUNTING HOLE SIZE | DRILL SIZE | FEED THRU COMBINATION |
|-------------------------------|--------------------|------------|-----------------------|
| SWAGE MOUNT                   | 0.067" ± 0.001     | #51        | N/A                   |

**PART NO. STRUCTURE:**

10-471 - X - XX  
 PART SERIES    DIMENSION    FINISH

**MATERIAL OPTIONS:**

10-471-X-XX

| COMPONENT | MATERIAL | MATERIAL AND SPECIFICATION                 |
|-----------|----------|--|
| TERMINAL  | BRASS    | BRASS PER ASTM B16, ALLOY C36000, 1/2 HARD |

**DIMENSION OPTIONS:**

10-471-X-XX

| DIMENSION | A   | D   | PIN DIAMETER | OVERALL LENGTH | SHANK LENGTH (L) | BOARD/PANEL THICKNESS |
|-----------|-----|-----|--------------|----------------|------------------|-----------------------|
| 1         | N/A | N/A | N/A          | 0.209"         | 0.053"           | 1/32"                 |
| 2         | N/A | N/A | N/A          | 0.240"         | 0.084"           | 1/16"                 |
| 3         | N/A | N/A | N/A          | 0.271"         | 0.115"           | 3/32"                 |
| 4         | N/A | N/A | N/A          | 0.303"         | 0.147"           | 1/8"                  |
| 5         | N/A | N/A | N/A          | 0.334"         | 0.178"           | 5/32"                 |
| 6         | N/A | N/A | N/A          | 0.365"         | 0.209"           | 3/16"                 |

Continued on next page...

DIMENSION OPTIONS CONTINUED:

10-471-X-XX

| DIMENSION | A   | D   | PIN DIAMETER | OVERALL LENGTH | SHANK LENGTH (L) | BOARD/PANEL THICKNESS |
|-----------|-----|-----|--------------|----------------|------------------|-----------------------|
| 11        | N/A | N/A | N/A          | 0.193"         | 0.037"           | 1/64"                 |

FINISH - PLATING OPTIONS:

10-471-X-XX

| FINISH CODE | COMPONENT | FINISH             | FINISH AND SPECIFICATION  |
|-------------|-----------|--------------------|---|
| 01          | TERMINAL  | SILVER             | 0.000300"MIN. SILVER PER ASTM B700, TYPE 2, GRADE D WITH A NON-CHROMATE PRESERVATIVE TREATMENT      |
| 03          | TERMINAL  | GOLD               | 0.000010"MIN. GOLD PER ASTM B488, TYPE II, CODE C OVER 0.000050"MIN. NICKEL PER SAE-AMS-QQ-N-290    |
| 035         | TERMINAL  | GOLD               | 0.000050"MIN. GOLD PER ASTM B488, TYPE II, CODE C OVER 0.000050"MIN. NICKEL PER SAE-AMS-QQ-N-290    |
| 04          | TERMINAL  | ELECTRO-TIN        | 0.000300"MIN. ELECTRO-TIN PER ASTM B545 OVER 0.000100"MIN. COPPER PER SAE-AMS-2418                  |
| 044         | TERMINAL  | BRIGHT ELECTRO-TIN | 0.000300"MIN. BRIGHT ELECTRO-TIN PER ASTM B545 OVER 0.000100"MIN. COPPER PER SAE-AMS-2418           |
| 05          | TERMINAL  | ELECTRO-SOLDER     | 0.000300"MIN. ELECTRO-SOLDER PER SAE-AMS-P-81728 OVER 0.000100"MIN. COPPER PER SAE-AMS-2418         |
| 088         | TERMINAL  | BRIGHT TIN-LEAD    | 0.000300"MIN. BRIGHT TIN-LEAD (Sn93%-Pb7%) PER ASTM B545 OVER 0.000100"MIN. COPPER PER SAE-AMS-2418 |

TOLERANCES:\*

| DECIMAL | FRACTIONAL | ANGULAR | DRAWING ORIGATION DATE | LAST MODIFICATION DATE |
|---------|------------|---------|------------------------|------------------------|
| ± 0.005 | ± 1/64     | ± 5 °   | 5/17/2005              | 3/1/2017               |

\*All dimensions are in inches.

RoHS COMPLIANCE:

10-471-1-XX

| PART NUMBER  | RoHS COMPLIANT |
|--------------|----------------|
| 10-471-1-01  | YES            |
| 10-471-1-03  | YES            |
| 10-471-1-035 | YES            |
| 10-471-1-04  | YES            |
| 10-471-1-044 | YES            |
| 10-471-1-05  | NO             |
| 10-471-1-088 | NO             |

10-471-2-XX

| PART NUMBER  | RoHS COMPLIANT |
|--------------|----------------|
| 10-471-2-01  | YES            |
| 10-471-2-03  | YES            |
| 10-471-2-035 | YES            |
| 10-471-2-04  | YES            |
| 10-471-2-044 | YES            |
| 10-471-2-05  | NO             |
| 10-471-2-088 | NO             |

10-471-3-XX

| PART NUMBER  | RoHS COMPLIANT |
|--------------|----------------|
| 10-471-3-01  | YES            |
| 10-471-3-03  | YES            |
| 10-471-3-035 | YES            |
| 10-471-3-04  | YES            |
| 10-471-3-044 | YES            |
| 10-471-3-05  | NO             |
| 10-471-3-088 | NO             |

Continued on next page...

RoHS COMPLIANCE CONTINUED:

10-471-4-XX

| PART NUMBER  | RoHS COMPLIANT |
|--------------|----------------|
| 10-471-4-01  | YES            |
| 10-471-4-03  | YES            |
| 10-471-4-035 | YES            |
| 10-471-4-04  | YES            |
| 10-471-4-044 | YES            |
| 10-471-4-05  | NO             |
| 10-471-4-088 | NO             |

10-471-5-XX

| PART NUMBER  | RoHS COMPLIANT |
|--------------|----------------|
| 10-471-5-01  | YES            |
| 10-471-5-03  | YES            |
| 10-471-5-035 | YES            |
| 10-471-5-04  | YES            |
| 10-471-5-044 | YES            |
| 10-471-5-05  | NO             |
| 10-471-5-088 | NO             |

10-471-6-XX

| PART NUMBER  | RoHS COMPLIANT |
|--------------|----------------|
| 10-471-6-01  | YES            |
| 10-471-6-03  | YES            |
| 10-471-6-035 | YES            |
| 10-471-6-04  | YES            |
| 10-471-6-044 | YES            |
| 10-471-6-05  | NO             |
| 10-471-6-088 | NO             |

10-471-11-XX

| PART NUMBER   | RoHS COMPLIANT |
|---------------|----------------|
| 10-471-11-01  | YES            |
| 10-471-11-03  | YES            |
| 10-471-11-035 | YES            |
| 10-471-11-04  | YES            |
| 10-471-11-044 | YES            |
| 10-471-11-05  | NO             |
| 10-471-11-088 | NO             |

TOOLING:

| INSTALLATION TOOL:<br>ARBOR PRESS | INSTALLATION TOOL:<br>ANVIL<br>(ARBOR PRESS OPERATED) | INSTALLATION TOOL:<br>PRESS-FIT / ROLL SWAGE / RIVET PUNCH<br>(ARBOR PRESS OPERATED) | INSTALLATION TOOL:<br>FLARE SWAGE PUNCH<br>(ARBOR PRESS OPERATED) |
|-----------------------------------|---|--|---|
| TM1                               | TA10-401  | TP62-44  | TFLP90-150  |

NOTES:

| DATASHEET NOTES |
|-----------------|
| N/A             |

| INSTRUCTION NOTES   |
|---|
| SEE GENERAL SWAGING INSTALLATION INSTRUCTION ON CONCORD ELECTRONICS' WEBSITE <a href="http://WWW.CONCORD-ELECTRONICS.COM">WWW.CONCORD-ELECTRONICS.COM</a> . |