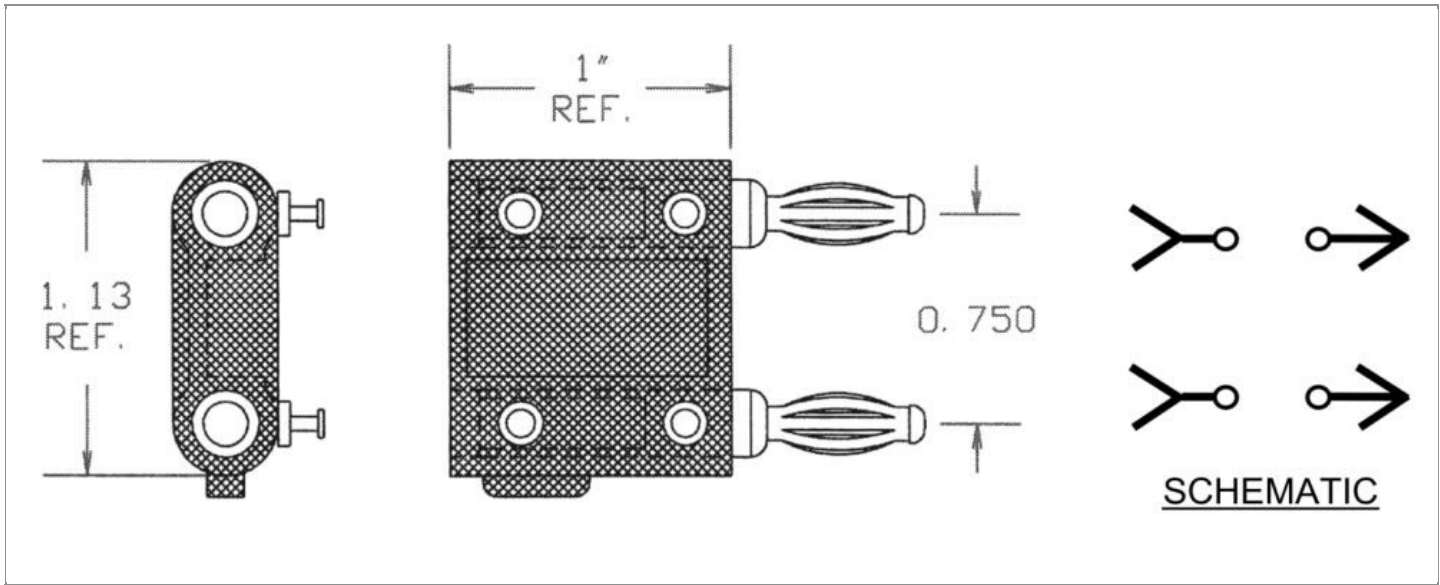


|                        |  |
|------------------------|--|
| <b>DRAWING NUMBER:</b> | <b>01-2571-1-XXXX</b>  |
| <b>PRODUCT GROUP:</b>  | BANANA PLUGS, JACKS AND PHONE TIPS   |
| <b>SUB-GROUP:</b>      | INSULATED BANANA PLUGS   |
| <b>DESCRIPTION:</b>    | INSULATED DUAL STANDARD BANANA PLUGS/JACKS ADAPTER W/FOUR ISOLATED TERMINALS |



| ACCEPTS<br>PIN / PLUG / JACK SIZE | OVERALL LENGTH | CABLE / WIRE SIZE |
|-----------------------------------|----------------|-------------------|
| STANDARD BANANA JACKS/PLUGS       | 1.535"         | N/A               |

**PART NO. STRUCTURE:**

|             |   |           |   |        |                  |
|-------------|---|-----------|---|--------|------------------|
| 01-2571     | - | 1         | - | XX     | XX               |
| PART SERIES |   | DIMENSION |   | FINISH | INSULATION COLOR |

**MATERIAL OPTIONS:**

**01-2571-1-XXXX**

| COMPONENT     | MATERIAL         | MATERIAL AND SPECIFICATION                   |
|---------------|------------------|--|
| BODY          | BRASS            | BRASS PER ASTM B16, ALLOY C36000, 1/2 HARD   |
| SPRING (CAGE) | BERYLLIUM COPPER | BERYLLIUM COPPER PER ASTM B194, ALLOY C17200 |
| INSULATION*   | ABS              | ABS PER ASTM D4673                           |
| TERMINAL      | BRASS            | BRASS PER ASTM B16, ALLOY C36000, 1/2 HARD   |
| SET SCREW     | N/A              | N/A  |
| STUD          | N/A              | N/A  |
| JACK SPRING   | N/A              | N/A  |

\*For Insulation color, please see INSULATION COLOR OPTIONS on Page 3

FINISH - PLATING OPTIONS:

01-2571-1-XXXX

| FINISH CODE | COMPONENT     | FINISH             | FINISH AND SPECIFICATION   |
|-------------|---------------|--------------------|--|
| 01          | BODY          | SILVER             | 0.000100"MIN. SILVER PER ASTM B700, TYPE 2, GRADE D WITH A NON-CHROMATE PRESERVATIVE TREATMENT |
|             | SPRING (CAGE) | SILVER             | 0.000300"MIN. SILVER PER ASTM B700, TYPE 2, GRADE D WITH A NON-CHROMATE PRESERVATIVE TREATMENT |
|             | TERMINAL      | SILVER             | 0.000100"MIN. SILVER PER ASTM B700, TYPE 2, GRADE D WITH A NON-CHROMATE PRESERVATIVE TREATMENT |
|             | SET SCREW     | N/A                | N/A  |
|             | STUD          | N/A                | N/A  |
|             | JACK SPRING   | N/A                | N/A  |
| 02          | BODY          | NICKEL             | 0.000100"MIN. NICKEL PER SAE-AMS-QQ-N-290  |
|             | SPRING (CAGE) | NICKEL             | 0.000200"MIN. NICKEL PER SAE-AMS-QQ-N-290  |
|             | TERMINAL      | BRIGHT ELECTRO-TIN | 0.000200"MIN. BRIGHT ELECTRO-TIN PER ASTM B545   |
|             | SET SCREW     | N/A                | N/A  |
|             | STUD          | N/A                | N/A  |
|             | JACK SPRING   | N/A                | N/A  |
| 03          | BODY          | GOLD               | GOLD FLASH PER ASTM B488, TYPE II, CODE C  |
|             | SPRING (CAGE) | GOLD               | 0.000010"MIN. GOLD PER ASTM B488, TYPE II, CODE C  |
|             | TERMINAL      | GOLD               | 0.000010"MIN. GOLD PER ASTM B488, TYPE II, CODE C  |
|             | SET SCREW     | N/A                | N/A  |
|             | STUD          | N/A                | N/A  |
|             | JACK SPRING   | N/A                | N/A  |
| 044         | BODY          | BRIGHT ELECTRO-TIN | 0.000200"MIN. BRIGHT ELECTRO-TIN PER ASTM B545   |
|             | SPRING (CAGE) | BRIGHT ELECTRO-TIN | 0.000200"MIN. BRIGHT ELECTRO-TIN PER ASTM B545   |
|             | TERMINAL      | BRIGHT ELECTRO-TIN | 0.000200"MIN. BRIGHT ELECTRO-TIN PER ASTM B545   |
|             | SET SCREW     | N/A                | N/A  |
|             | STUD          | N/A                | N/A  |
|             | JACK SPRING   | N/A                | N/A  |

INSULATION COLOR OPTIONS:

01-2571-1-XX **XX**

| INSULATION COLOR | BLACK | BLUE | BROWN | GRAY | GREEN | ORANGE | RED | VIOLET | WHITE | YELLOW |
|------------------|-------|------|-------|------|-------|--------|-----|--------|-------|--------|
| COLOR CODE NO.   | 10    | 16   | 11    | 18   | 15    | 13     | 12  | 17     | 19    | 14     |

TOLERANCES:\*

| DECIMAL | FRACTIONAL | ANGULAR | DRAWING ORIGATION DATE | LAST MODIFICATION DATE |
|---------|------------|---------|------------------------|------------------------|
| ± 0.010 | ± 1/64     | ± 5 °   | 6/15/1998              | 4/1/2017               |

\*All dimensions are in inches.

RoHS COMPLIANCE:

01-2571-1-01XX

| PART NUMBER    | RoHS COMPLIANT |
|----------------|----------------|
| 01-2571-1-0110 | YES            |
| 01-2571-1-0111 | YES            |
| 01-2571-1-0112 | YES            |
| 01-2571-1-0113 | YES            |
| 01-2571-1-0114 | YES            |
| 01-2571-1-0115 | YES            |
| 01-2571-1-0116 | YES            |
| 01-2571-1-0117 | YES            |
| 01-2571-1-0118 | YES            |
| 01-2571-1-0119 | YES            |

01-2571-1-02XX

| PART NUMBER    | RoHS COMPLIANT |
|----------------|----------------|
| 01-2571-1-0210 | YES            |
| 01-2571-1-0211 | YES            |
| 01-2571-1-0212 | YES            |
| 01-2571-1-0213 | YES            |
| 01-2571-1-0214 | YES            |
| 01-2571-1-0215 | YES            |
| 01-2571-1-0216 | YES            |
| 01-2571-1-0217 | YES            |
| 01-2571-1-0218 | YES            |
| 01-2571-1-0219 | YES            |

01-2571-1-03XX

| PART NUMBER    | RoHS COMPLIANT |
|----------------|----------------|
| 01-2571-1-0310 | YES            |
| 01-2571-1-0311 | YES            |
| 01-2571-1-0312 | YES            |
| 01-2571-1-0313 | YES            |
| 01-2571-1-0314 | YES            |
| 01-2571-1-0315 | YES            |
| 01-2571-1-0316 | YES            |
| 01-2571-1-0317 | YES            |
| 01-2571-1-0318 | YES            |
| 01-2571-1-0319 | YES            |

01-2571-1-044XX

| PART NUMBER     | RoHS COMPLIANT |
|-----------------|----------------|
| 01-2571-1-04410 | YES            |
| 01-2571-1-04411 | YES            |
| 01-2571-1-04412 | YES            |
| 01-2571-1-04413 | YES            |
| 01-2571-1-04414 | YES            |
| 01-2571-1-04415 | YES            |
| 01-2571-1-04416 | YES            |
| 01-2571-1-04417 | YES            |
| 01-2571-1-04418 | YES            |
| 01-2571-1-04419 | YES            |

**NOTES:**

---

**DATASHEET NOTES**

RATED: 15 AMPERES CAPACITY, 2500 WVDC MAXIMUM. STANDARD SIZE BANANA PLUGS/JACKS WITH FOUR TURRET TERMINALS.

---

**INSTRUCTION NOTES**

FOUR TURRET TERMINALS TO ISOLATED PLUGS AND JACKS IN BOTH GROUND AND HOT CIRCUITS.

---