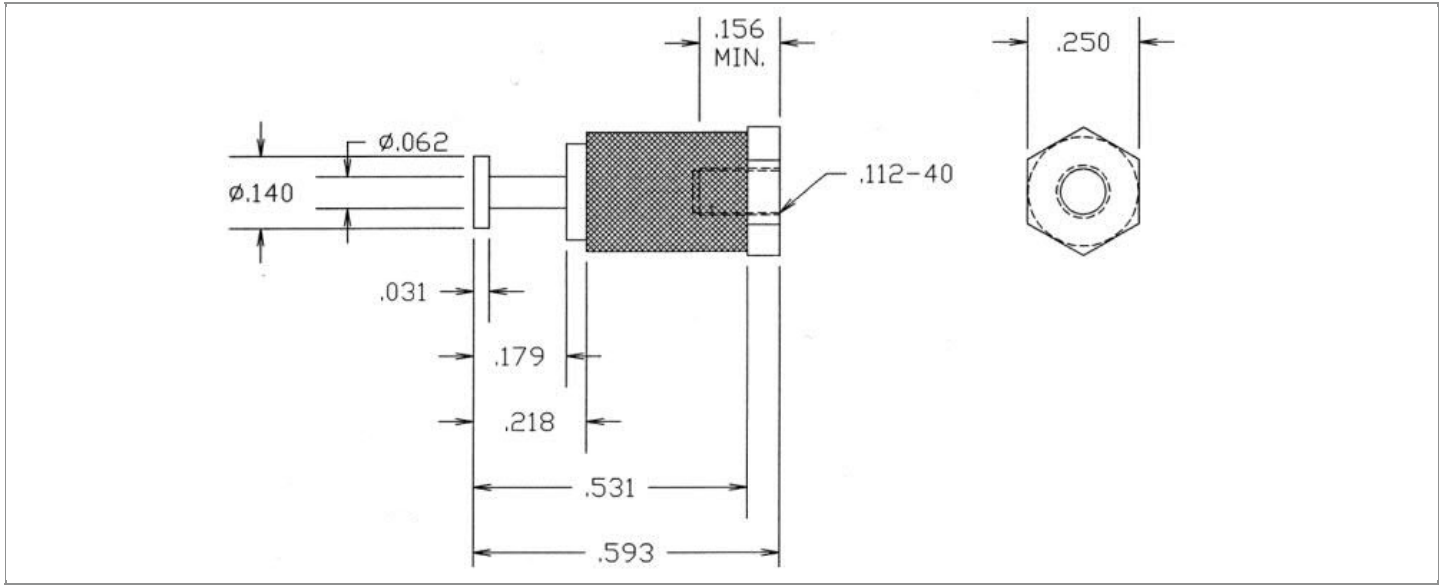


<b>DRAWING NUMBER:</b>	<b>1127-01M-XXXXZ</b>
<b>PRODUCT GROUP:</b>	TERMINALS
<b>SUB-GROUP:</b>	MILITARY INSULATED TERMINALS
<b>DESCRIPTION:</b>	DIALLYL PHTHALATE INSULATED TURRET TERMINAL



PIN DIAMETER	OVERALL LENGTH	MOUNTING ORIENTATION	BOARD / PANEL MOUNTING METHOD
N/A	0.593"	VERTICAL	THREAD MOUNT (4-40 SCREW)
BOARD / PANEL THICKNESS	MOUNTING HOLE SIZE	DRILL SIZE	FEED THRU COMBINATION
N/A	CLEARANCE FOR SCREW #4	#31	N/A

**PART NO. STRUCTURE:\***

1127	-	01M	-	XX	XX
PART SERIES		DIMENSION		FINISH	INSULATION COLOR

\*If applicable, "Z" at the end of a PART NO. STRUCTURE indicates TERMINAL MATERIAL TYPE.

**MATERIAL OPTIONS:**

**1127-01M-XXXXZ**

COMPONENT	MATERIAL	MATERIAL AND SPECIFICATION
TERMINAL	PHOSPHOR BRONZE	PHOSPHOR BRONZE PER ASTM B139, ALLOY C54400
BASE/METAL SLEEVE	BRASS	BRASS PER ASTM B16, ALLOY C36000, 1/2 HARD
INSULATION*	DIALLYL PHTHALATE	MOLDED DIALLYL PHTHALATE, TYPE SDG-F PER ASTM D5948
NUT	N/A	N/A
WASHER	N/A	N/A

\*For Insulation color, please see INSULATION COLOR OPTIONS on Page 2

FINISH - PLATING OPTIONS:

1127-01M-XX~~XX~~Z

FINISH CODE	COMPONENT	FINISH	FINISH AND SPECIFICATION
05	TERMINAL	ELECTRO-SOLDER	0.000300"MIN. ELECTRO-SOLDER PER SAE-AMS-P-81728 OVER 0.000100"MIN. COPPER PER SAE-AMS-2418
	BASE/METAL SLEEVE	ELECTRO-SOLDER	0.000100"MIN. ELECTRO-SOLDER PER SAE-AMS-P-81728 OVER 0.000100"MIN. NICKEL PER SAE-AMS-QQ-N-290
	NUT	N/A	N/A
	WASHER	N/A	N/A
088	TERMINAL	BRIGHT TIN-LEAD	0.000300"MIN. BRIGHT TIN-LEAD (Sn93%-Pb7%) PER ASTM B545 OVER 0.000100"MIN. COPPER PER SAE-AMS-2418
	BASE/METAL SLEEVE	BRIGHT TIN-LEAD	0.000100"MIN. BRIGHT TIN-LEAD (Sn93%-Pb7%) PER ASTM B545 OVER 0.000100"MIN. NICKEL PER SAE-AMS-QQ-N-290
	NUT	N/A	N/A
	WASHER	N/A	N/A
095	TERMINAL	HOT SOLDER DIP	0.000100"MIN. HOT SOLDER DIP USING Sn60 PER IPC-J-STD-006 OVER 0.000100"MIN. COPPER PER SAE-AMS-2418
	BASE/METAL SLEEVE	BRIGHT TIN-LEAD	0.000100"MIN. BRIGHT TIN-LEAD (Sn93%-Pb7%) PER ASTM B545 OVER 0.000100"MIN. NICKEL PER SAE-AMS-QQ-N-290
	NUT	N/A	N/A
	WASHER	N/A	N/A

INSULATION COLOR OPTIONS:

1127-01M-XX~~XX~~Z

INSULATION COLOR	BLACK	BLUE	BROWN	GRAY	GREEN	ORANGE	RED	VIOLET	WHITE	YELLOW
COLOR CODE NO.	10	16	11	18	15	13	12	17	19	14

TOLERANCES:\*

DECIMAL	FRACTIONAL	ANGULAR	DRAWING ORIGATION DATE	LAST MODIFICATION DATE
± 0.015	N/A	N/A	3/29/1996	3/1/2017

\*All dimensions are in inches.

RoHS COMPLIANCE:

1127-01M-05XXZ

PART NUMBER	RoHS COMPLIANT
1127-01M-0510Z	NO
1127-01M-0511Z	NO
1127-01M-0512Z	NO
1127-01M-0513Z	NO
1127-01M-0514Z	NO
1127-01M-0515Z	NO
1127-01M-0516Z	NO
1127-01M-0517Z	NO
1127-01M-0518Z	NO
1127-01M-0519Z	NO

1127-01M-088XXZ

PART NUMBER	RoHS COMPLIANT
1127-01M-08810Z	NO
1127-01M-08811Z	NO
1127-01M-08812Z	NO
1127-01M-08813Z	NO
1127-01M-08814Z	NO
1127-01M-08815Z	NO
1127-01M-08816Z	NO
1127-01M-08817Z	NO
1127-01M-08818Z	NO
1127-01M-08819Z	NO

1127-01M-095XXZ

PART NUMBER	RoHS COMPLIANT
1127-01M-09510Z	NO
1127-01M-09511Z	NO
1127-01M-09512Z	NO
1127-01M-09513Z	NO
1127-01M-09514Z	NO
1127-01M-09515Z	NO
1127-01M-09516Z	NO
1127-01M-09517Z	NO
1127-01M-09518Z	NO
1127-01M-09519Z	NO

MILITARY REFERENCE SPECIFICATIONS:

1127-01M-05XXZ

PART NUMBER	MIL SPECIFICATION	MIL PART NUMBER	COMMERCIAL ITEM DESCRIPTION (CID) SPECIFICATION	CID PART NUMBER
1127-01M-0510Z	MIL-T-55155/19	M55155/190B01 (SE190D01Z)	A-A-59126/19	AA59126/190B01
1127-01M-0511Z	MIL-T-55155/19	M55155/191B01 (SE191D01Z)	A-A-59126/19	AA59126/191B01
1127-01M-0512Z	MIL-T-55155/19	M55155/192B01 (SE192D01Z)	A-A-59126/19	AA59126/192B01
1127-01M-0513Z	MIL-T-55155/19	M55155/193B01 (SE193D01Z)	A-A-59126/19	AA59126/193B01
1127-01M-0514Z	MIL-T-55155/19	M55155/194B01 (SE194D01Z)	A-A-59126/19	AA59126/194B01
1127-01M-0515Z	MIL-T-55155/19	M55155/195B01 (SE195D01Z)	A-A-59126/19	AA59126/195B01
1127-01M-0516Z	MIL-T-55155/19	M55155/196B01 (SE196D01Z)	A-A-59126/19	AA59126/196B01
1127-01M-0517Z	MIL-T-55155/19	M55155/197B01 (SE197D01Z)	A-A-59126/19	AA59126/197B01
1127-01M-0518Z	MIL-T-55155/19	M55155/198B01 (SE198D01Z)	A-A-59126/19	AA59126/198B01
1127-01M-0519Z	MIL-T-55155/19	M55155/199B01 (SE199D01Z)	A-A-59126/19	AA59126/199B01

1127-01M-088XXZ

PART NUMBER	MIL SPECIFICATION	MIL PART NUMBER	COMMERCIAL ITEM DESCRIPTION (CID) SPECIFICATION	CID PART NUMBER
1127-01M-08810Z	MIL-T-55155/19	M55155/190D01	A-A-59126/19	AA59126/190D01
1127-01M-08811Z	MIL-T-55155/19	M55155/191D01	A-A-59126/19	AA59126/191D01
1127-01M-08812Z	MIL-T-55155/19	M55155/192D01	A-A-59126/19	AA59126/192D01
1127-01M-08813Z	MIL-T-55155/19	M55155/193D01	A-A-59126/19	AA59126/193D01
1127-01M-08814Z	MIL-T-55155/19	M55155/194D01	A-A-59126/19	AA59126/194D01

Continued on next page...

MILITARY REFERENCE SPECIFICATIONS CONTINUED:

1127-01M-088XXZ

PART NUMBER	MIL SPECIFICATION	MIL PART NUMBER	COMMERCIAL ITEM DESCRIPTION (CID) SPECIFICATION	CID PART NUMBER
1127-01M-08815Z	MIL-T-55155/19	M55155/195D01	A-A-59126/19	AA59126/195D01
1127-01M-08816Z	MIL-T-55155/19	M55155/196D01	A-A-59126/19	AA59126/196D01
1127-01M-08817Z	MIL-T-55155/19	M55155/197D01	A-A-59126/19	AA59126/197D01
1127-01M-08818Z	MIL-T-55155/19	M55155/198D01	A-A-59126/19	AA59126/198D01
1127-01M-08819Z	MIL-T-55155/19	M55155/199D01	A-A-59126/19	AA59126/199D01

1127-01M-095XXZ

PART NUMBER	MIL SPECIFICATION	MIL PART NUMBER	COMMERCIAL ITEM DESCRIPTION (CID) SPECIFICATION	CID PART NUMBER
1127-01M-09510Z	MIL-T-55155/19	M55155/190C01	A-A-59126/19	AA59126/190C01
1127-01M-09511Z	MIL-T-55155/19	M55155/191C01	A-A-59126/19	AA59126/191C01
1127-01M-09512Z	MIL-T-55155/19	M55155/192C01	A-A-59126/19	AA59126/192C01
1127-01M-09513Z	MIL-T-55155/19	M55155/193C01	A-A-59126/19	AA59126/193C01
1127-01M-09514Z	MIL-T-55155/19	M55155/194C01	A-A-59126/19	AA59126/194C01
1127-01M-09515Z	MIL-T-55155/19	M55155/195C01	A-A-59126/19	AA59126/195C01
1127-01M-09516Z	MIL-T-55155/19	M55155/196C01	A-A-59126/19	AA59126/196C01
1127-01M-09517Z	MIL-T-55155/19	M55155/197C01	A-A-59126/19	AA59126/197C01
1127-01M-09518Z	MIL-T-55155/19	M55155/198C01	A-A-59126/19	AA59126/198C01
1127-01M-09519Z	MIL-T-55155/19	M55155/199C01	A-A-59126/19	AA59126/199C01

TOOLING:

INSTALLATION TOOL: ARBOR PRESS	INSTALLATION TOOL: ANVIL (ARBOR PRESS OPERATED)	INSTALLATION TOOL: PRESS-FIT / ROLL SWAGE / RIVET PUNCH (ARBOR PRESS OPERATED)	INSTALLATION TOOL: PRESS-FIT (HAND OPERATED)
N/A	N/A	N/A	N/A

NOTES:

<b>DATASHEET NOTES</b>
SCREW IS NOT INCLUDED.
<b>INSTRUCTION NOTES</b>
N/A