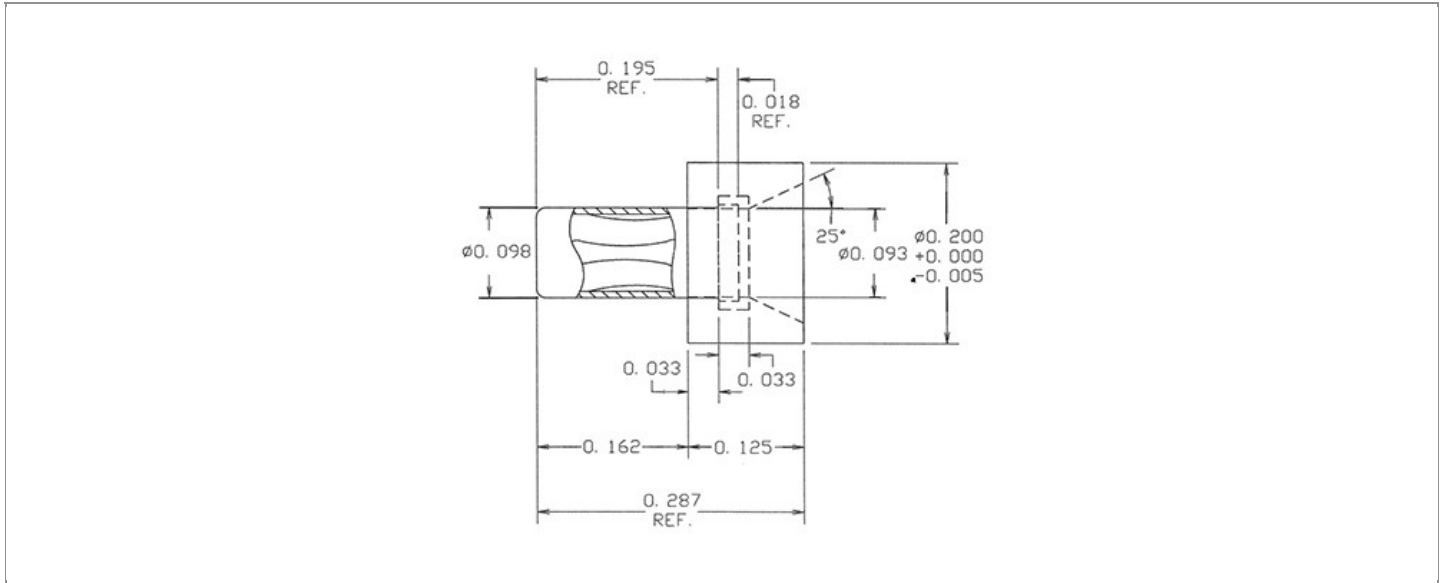


<b>DRAWING NUMBER:</b>	<b>09-9216-1-XXXX</b>
<b>PRODUCT GROUP:</b>	PC JACKS
<b>SUB-GROUP:</b>	INSULATED PC JACKS
<b>DESCRIPTION:</b>	TEST POINT INSULATED JACK - VERTICAL MOUNT



ACCEPTS PIN / PLUG / JACK SIZE	OVERALL LENGTH	MIN. HOLE DEPTH	MOUNTING ORIENTATION
0.060" ± 0.001	0.287"	0.250"	VERTICAL
BOARD / PANEL MOUNTING METHOD	MOUNTING HOLE SIZE	BOARD / PANEL THICKNESS	FEED THRU COMBINATION
SOLDER	0.102" ± 0.002	1/32" - 3/32"	N/A

**PART NO. STRUCTURE:**

<b>09-9216</b>	-	<b>1</b>	-	<b>XX</b>	<b>XX</b>
PART SERIES		DIMENSION		FINISH	INSULATION COLOR

**MATERIAL OPTIONS:**

**09-9216-1-XXXX**

COMPONENT	MATERIAL	MATERIAL AND SPECIFICATION
<b>BODY</b>	BRASS	BRASS PER ASTM B16, ALLOY C36000, 1/2 HARD
<b>SPRING (CAGE)</b>	BERYLLIUM COPPER	BERYLLIUM COPPER PER ASTM B194, ALLOY C17200
<b>INSULATION*</b>	PTFE	PTFE PER ASTM D1710
<b>MOUNTING BRACKET</b>	N/A	N/A

\*For Insulation color, please see INSULATION COLOR OPTIONS on Page 2

FINISH - PLATING OPTIONS:

09-9216-1-XXXX

FINISH CODE	COMPONENT	FINISH	FINISH AND SPECIFICATION
03	BODY	GOLD	0.000010"MIN. GOLD PER ASTM B488, TYPE II, CODE C OVER 0.000100"MIN. NICKEL PER SAE-AMS-QQ-N-290, CLASS 2
	SPRING (CAGE)	GOLD	0.000030"MIN. GOLD PER ASTM B488, TYPE II, CODE C OVER 0.000100"MIN. NICKEL PER SAE-AMS-QQ-N-290, CLASS 2
	MOUNTING BRACKET	N/A	N/A
035	BODY	GOLD	0.000020"MIN. GOLD PER ASTM B488, TYPE II, CODE C OVER 0.000100"MIN. NICKEL PER SAE-AMS-QQ-N-290, CLASS 2
	SPRING (CAGE)	GOLD	0.000050"MIN. GOLD PER ASTM B488, TYPE II, CODE C OVER 0.000100"MIN. NICKEL PER SAE-AMS-QQ-N-290, CLASS 2
	MOUNTING BRACKET	N/A	N/A
044	BODY	BRIGHT TIN-LEAD	0.000200"MIN. BRIGHT ELECTRO-TIN PER ASTM B545 OVER 0.000100"MIN. NICKEL PER SAE-AMS-QQ-N-290, CLASS 2
	SPRING (CAGE)	BRIGHT ELECTRO-TIN	0.000200"MIN. BRIGHT ELECTRO-TIN PER ASTM B545 OVER 0.000100"MIN. NICKEL PER SAE-AMS-QQ-N-290, CLASS 2
	MOUNTING BRACKET	N/A	N/A

INSULATION COLOR OPTIONS:

09-9216-1-XXXX

INSULATION COLOR	BLACK	BLUE	BROWN	GRAY	GREEN	ORANGE	RED	VIOLET	WHITE	YELLOW
COLOR CODE NO.	10	16	11	18	15	13	12	17	19	14

TOLERANCES:\*

DECIMAL	FRACTIONAL	ANGULAR	DRAWING ORIGINATION DATE	LAST MODIFICATION DATE
± 0.005	± 1/64	± 5 °	1/24/2002	1/1/2017

\*All dimensions are in inches.

RoHS COMPLIANCE:

09-9216-1-03XX

PART NUMBER	RoHS COMPLIANT
09-9216-1-0310	YES
09-9216-1-0311	NO
09-9216-1-0312	NO
09-9216-1-0313	NO
09-9216-1-0314	NO
09-9216-1-0315	YES
09-9216-1-0316	YES
09-9216-1-0317	YES
09-9216-1-0318	NO
09-9216-1-0319	YES

09-9216-1-035XX

PART NUMBER	RoHS COMPLIANT
09-9216-1-03510	YES
09-9216-1-03511	NO
09-9216-1-03512	NO
09-9216-1-03513	NO
09-9216-1-03514	NO
09-9216-1-03515	YES
09-9216-1-03516	YES
09-9216-1-03517	YES
09-9216-1-03518	NO
09-9216-1-03519	YES

09-9216-1-044XX

PART NUMBER	RoHS COMPLIANT
09-9216-1-04410	YES
09-9216-1-04411	NO
09-9216-1-04412	NO
09-9216-1-04413	NO
09-9216-1-04414	NO
09-9216-1-04415	YES
09-9216-1-04416	YES
09-9216-1-04417	YES
09-9216-1-04418	NO
09-9216-1-04419	YES

MILITARY REFERENCE SPECIFICATIONS:

09-9216-1-03XX

PART NUMBER	MIL SPECIFICATION	MIL PART NUMBER
09-9216-1-0310	N/A	N/A
09-9216-1-0311	N/A	N/A
09-9216-1-0312	N/A	N/A
09-9216-1-0313	N/A	N/A
09-9216-1-0314	N/A	N/A
09-9216-1-0315	N/A	N/A
09-9216-1-0316	N/A	N/A
09-9216-1-0317	N/A	N/A
09-9216-1-0318	N/A	N/A
09-9216-1-0319	N/A	N/A

09-9216-1-035XX

PART NUMBER	MIL SPECIFICATION	MIL PART NUMBER
09-9216-1-03510	N/A	N/A
09-9216-1-03511	N/A	N/A
09-9216-1-03512	N/A	N/A
09-9216-1-03513	N/A	N/A
09-9216-1-03514	N/A	N/A
09-9216-1-03515	N/A	N/A
09-9216-1-03516	N/A	N/A
09-9216-1-03517	N/A	N/A
09-9216-1-03518	N/A	N/A
09-9216-1-03519	N/A	N/A

09-9216-1-044XX

PART NUMBER	MIL SPECIFICATION	MIL PART NUMBER
09-9216-1-04410	N/A	N/A
09-9216-1-04411	N/A	N/A
09-9216-1-04412	N/A	N/A
09-9216-1-04413	N/A	N/A
09-9216-1-04414	N/A	N/A
09-9216-1-04415	N/A	N/A
09-9216-1-04416	N/A	N/A

Continued on next page...

MILITARY REFERENCE SPECIFICATIONS CONTINUED:

09-9216-1-044XX

PART NUMBER	MIL SPECIFICATION	MIL PART NUMBER
09-9216-1-04417	N/A	N/A
09-9216-1-04418	N/A	N/A
09-9216-1-04419	N/A	N/A

TOOLING:

INSTALLATION TOOL: ARBOR PRESS	INSTALLATION TOOL: ANVIL (ARBOR PRESS OPERATED)	INSTALLATION TOOL: PRESS-FIT / ROLL SWAGE / RIVET PUNCH (ARBOR PRESS OPERATED)	INSTALLATION TOOL: PRESS-FIT (HAND OPERATED)	CRIMPING TOOL (COMMERCIAL VERSION)
N/A	N/A	N/A	N/A	N/A

NOTES:

DATASHEET NOTES
-----------------

CLOSED ENTRY CAGE.

INSTRUCTION NOTES
-------------------

N/A