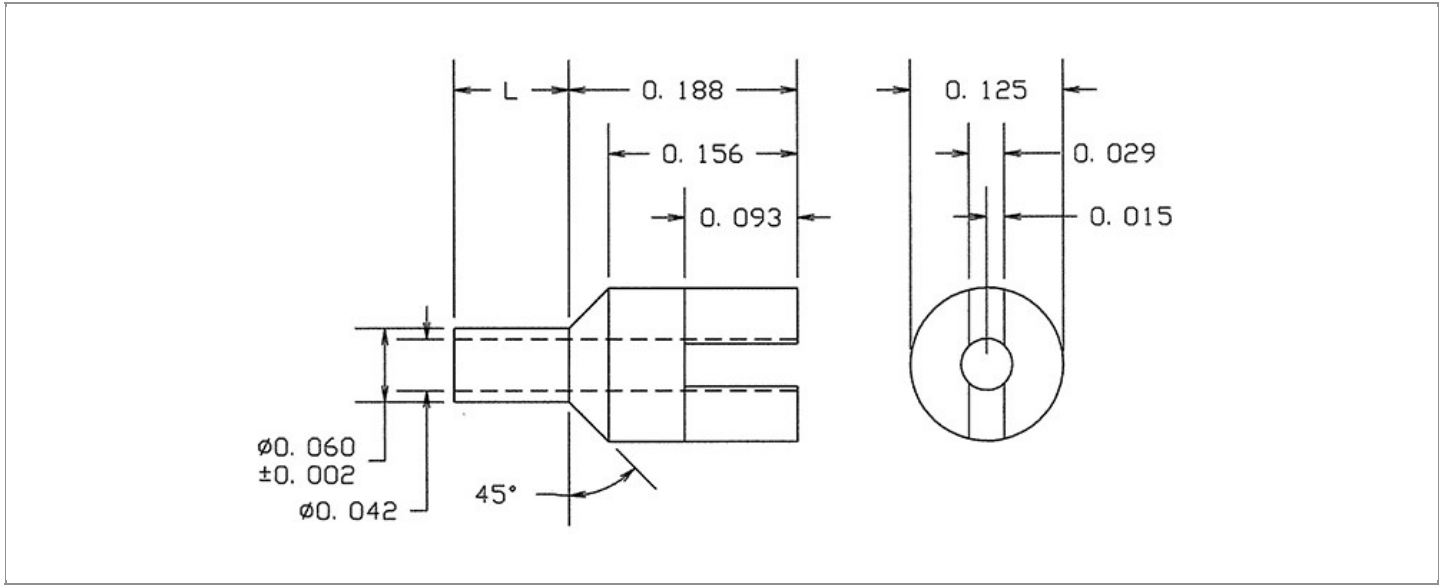


<b>DRAWING NUMBER:</b>	<b>15R-903-X-XX</b>
<b>PRODUCT GROUP:</b>	TERMINALS
<b>SUB-GROUP:</b>	MILITARY NON-INSULATED TERMINALS
<b>DESCRIPTION:</b>	NON-INSULATED THRU-HOLE SLOTTED TERMINAL



BOARD / PANEL MOUNTING METHOD	MOUNTING HOLE SIZE	DRILL SIZE	FEED THRU COMBINATION
SWAGE MOUNT	0.0635" ± 0.001	#52	N/A

**PART NO. STRUCTURE:**

15R-903 - X - XX  
 PART SERIES    DIMENSION    FINISH

**MATERIAL OPTIONS:**

15R-903-X-XX

COMPONENT	MATERIAL	MATERIAL AND SPECIFICATION
TERMINAL	PHOSPHOR BRONZE	PHOSPHOR BRONZE PER ASTM B139, ALLOY C54400

**DIMENSION OPTIONS:**

15R-903-X-XX

DIMENSION	K	OVERALL LENGTH	SHANK LENGTH (L)	BOARD/PANEL THICKNESS
1	N/A	0.250"	0.062"	1/32"
2	N/A	0.282"	0.094"	1/16"
3	N/A	0.313"	0.125"	3/32"
4	N/A	0.344"	0.156"	1/8"

FINISH - PLATING OPTIONS:

15R-903-X-**XX**

FINISH CODE	COMPONENT	FINISH	FINISH AND SPECIFICATION
05	TERMINAL	ELECTRO-SOLDER	0.000300"MIN. ELECTRO-SOLDER PER SAE-AMS-P-81728 OVER 0.000100"MIN. COPPER PER SAE-AMS-2418
088	TERMINAL	BRIGHT TIN-LEAD	0.000300"MIN. BRIGHT TIN-LEAD (Sn93%-Pb7%) PER ASTM B545 OVER 0.000100"MIN. COPPER PER SAE-AMS-2418
095	TERMINAL	HOT SOLDER DIP	0.000100"MIN. HOT SOLDER DIP USING Sn60 PER IPC-J-STD-006 OVER 0.000100"MIN. COPPER PER SAE-AMS-2418

TOLERANCES:\*

DECIMAL	FRACTIONAL	ANGULAR	DRAWING ORIGATION DATE	LAST MODIFICATION DATE
± 0.005	± 1/64	± 3 °	12/6/1997	3/1/2017

\*All dimensions are in inches.

RoHS COMPLIANCE:

15R-903-1-XX

PART NUMBER	RoHS COMPLIANT
15R-903-1-05	NO
15R-903-1-088	NO
15R-903-1-095	NO

15R-903-2-XX

PART NUMBER	RoHS COMPLIANT
15R-903-2-05	NO
15R-903-2-088	NO
15R-903-2-095	NO

15R-903-3-XX

PART NUMBER	RoHS COMPLIANT
15R-903-3-05	NO
15R-903-3-088	NO
15R-903-3-095	NO

15R-903-4-XX

PART NUMBER	RoHS COMPLIANT
15R-903-4-05	NO
15R-903-4-088	NO
15R-903-4-095	NO

MILITARY REFERENCE SPECIFICATIONS:

15R-903-1-XX

PART NUMBER	MIL SPECIFICATION	MIL PART NUMBER	COMMERCIAL ITEM DESCRIPTION (CID) SPECIFICATION	CID PART NUMBER
15R-903-1-05	MIL-T-55155/24	M55155/24XB01 (M55155/24-1Z; SE24XC01Z)	A-A-59126/24	AA59126/24XB01
15R-903-1-088	MIL-T-55155/24	M55155/24XD01	A-A-59126/24	AA59126/24XD01
15R-903-1-095	MIL-T-55155/24	M55155/24XC01	A-A-59126/24	AA59126/24XC01

Continued on next page...

MILITARY REFERENCE SPECIFICATIONS CONTINUED:

15R-903-2-XX

PART NUMBER	MIL SPECIFICATION	MIL PART NUMBER	COMMERCIAL ITEM DESCRIPTION (CID) SPECIFICATION	CID PART NUMBER
15R-903-2-05	MIL-T-55155/24	M55155/24XB02 (M55155/24-2Z; SE24XC02Z)	A-A-59126/24	AA59126/24XB02
15R-903-2-088	MIL-T-55155/24	M55155/24XD02	A-A-59126/24	AA59126/24XD02
15R-903-2-095	MIL-T-55155/24	M55155/24XC02	A-A-59126/24	AA59126/24XC02

15R-903-3-XX

PART NUMBER	MIL SPECIFICATION	MIL PART NUMBER	COMMERCIAL ITEM DESCRIPTION (CID) SPECIFICATION	CID PART NUMBER
15R-903-3-05	MIL-T-55155/24	M55155/24XB03 (M55155/24-3Z; SE24XC03Z)	A-A-59126/24	AA59126/24XB03
15R-903-3-088	MIL-T-55155/24	M55155/24XD03	A-A-59126/24	AA59126/24XD03
15R-903-3-095	MIL-T-55155/24	M55155/24XC03	A-A-59126/24	AA59126/24XC03

15R-903-4-XX

PART NUMBER	MIL SPECIFICATION	MIL PART NUMBER	COMMERCIAL ITEM DESCRIPTION (CID) SPECIFICATION	CID PART NUMBER
15R-903-4-05	MIL-T-55155/24	M55155/24XB04 (M55155/24-4Z; SE24XC04Z)	A-A-59126/24	AA59126/24XB04
15R-903-4-088	MIL-T-55155/24	M55155/24XD04	A-A-59126/24	AA59126/24XD04
15R-903-4-095	MIL-T-55155/24	M55155/24XC04	A-A-59126/24	AA59126/24XC04

TOOLING:

INSTALLATION TOOL: ARBOR PRESS	INSTALLATION TOOL: ANVIL (ARBOR PRESS OPERATED)	INSTALLATION TOOL: PRESS-FIT / ROLL SWAGE / RIVET PUNCH (ARBOR PRESS OPERATED)	INSTALLATION TOOL: FLARE SWAGE PUNCH (ARBOR PRESS OPERATED)
TM1	TA10-903	TP62-44	TFLP90-150

NOTES:

<b>DATASHEET NOTES</b>
N/A
<b>INSTRUCTION NOTES</b>
SEE GENERAL SWAGING INSTALLATION INSTRUCTION ON CONCORD ELECTRONICS' WEBSITE <a href="http://WWW.CONCORD-ELECTRONICS.COM">WWW.CONCORD-ELECTRONICS.COM</a>