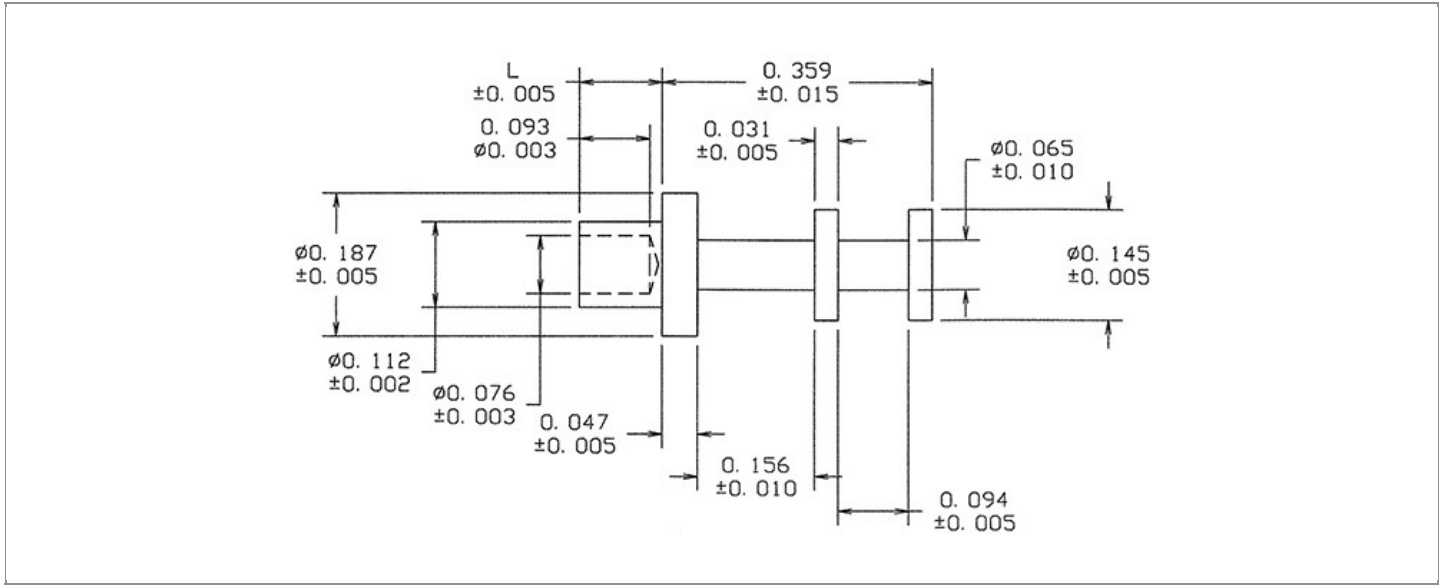


<b>DRAWING NUMBER:</b>	<b>15R-270-X-XX</b>
<b>PRODUCT GROUP:</b>	TERMINALS
<b>SUB-GROUP:</b>	MILITARY NON-INSULATED TERMINALS
<b>DESCRIPTION:</b>	NON-INSULATED DOUBLE TURRET TERMINAL



BOARD / PANEL MOUNTING METHOD	MOUNTING HOLE SIZE	DRILL SIZE	FEED THRU COMBINATION
SWAGE MOUNT	$0.116" \pm 0.001$	#32	N/A

**PART NO. STRUCTURE:**

15R-270 - X - XX  
 PART SERIES    DIMENSION    FINISH

**MATERIAL OPTIONS:**

15R-270-X-XX

COMPONENT	MATERIAL	MATERIAL AND SPECIFICATION
TERMINAL	PHOSPHOR BRONZE	PHOSPHOR BRONZE PER ASTM B139, ALLOY C54400

**DIMENSION OPTIONS:**

15R-270-X-XX

DIMENSION	K	OVERALL LENGTH	SHANK LENGTH (L)	BOARD/PANEL THICKNESS
1	N/A	0.437"	0.078"	1/32"
2	N/A	0.468"	0.109"	1/16"
3	N/A	0.499"	0.140"	3/32"
4	N/A	0.530"	0.171"	1/8"
6	N/A	0.593"	0.234"	3/16"
8	N/A	0.657"	0.298"	1/4"

FINISH - PLATING OPTIONS:

15R-270-X-**XX**

FINISH CODE	COMPONENT	FINISH	FINISH AND SPECIFICATION
05	TERMINAL	ELECTRO-SOLDER	0.000300"MIN. ELECTRO-SOLDER PER SAE-AMS-P-81728 OVER 0.000100"MIN. COPPER PER SAE-AMS-2418
088	TERMINAL	BRIGHT TIN-LEAD	0.000300"MIN. BRIGHT TIN-LEAD (Sn93%-Pb7%) PER ASTM B545 OVER 0.000100"MIN. COPPER PER SAE-AMS-2418
095	TERMINAL	HOT SOLDER DIP	0.000100"MIN. HOT SOLDER DIP USING Sn60 PER IPC-J-STD-006 OVER 0.000100"MIN. COPPER PER SAE-AMS-2418

TOLERANCES:\*

DECIMAL	FRACTIONAL	ANGULAR	DRAWING ORIGATION DATE	LAST MODIFICATION DATE
± 0.005	N/A	± 3 °	2/2/2000	3/1/2017

\*All dimensions are in inches.

RoHS COMPLIANCE:

15R-270-1-XX

PART NUMBER	RoHS COMPLIANT
15R-270-1-05	NO
15R-270-1-088	NO
15R-270-1-095	NO

15R-270-2-XX

PART NUMBER	RoHS COMPLIANT
15R-270-2-05	NO
15R-270-2-088	NO
15R-270-2-095	NO

15R-270-3-XX

PART NUMBER	RoHS COMPLIANT
15R-270-3-05	NO
15R-270-3-088	NO
15R-270-3-095	NO

15R-270-4-XX

PART NUMBER	RoHS COMPLIANT
15R-270-4-05	NO
15R-270-4-088	NO
15R-270-4-095	NO

15R-270-6-XX

PART NUMBER	RoHS COMPLIANT
15R-270-6-05	NO
15R-270-6-088	NO
15R-270-6-095	NO

15R-270-8-XX

PART NUMBER	RoHS COMPLIANT
15R-270-8-05	NO
15R-270-8-088	NO
15R-270-8-095	NO

MILITARY REFERENCE SPECIFICATIONS:

15R-270-1-XX

PART NUMBER	MIL SPECIFICATION	MIL PART NUMBER	COMMERCIAL ITEM DESCRIPTION (CID) SPECIFICATION	CID PART NUMBER
15R-270-1-05	MIL-T-55155/30	M55155/30XB04 (M55155/30-4Z; SE30XC04Z)	A-A-59126/30	AA59126/30XB04
15R-270-1-088	MIL-T-55155/30	M55155/30XD04	A-A-59126/30	AA59126/30XD04
15R-270-1-095	MIL-T-55155/30	M55155/30XC04	A-A-59126/30	AA59126/30XC04

Continued on next page...

## MILITARY REFERENCE SPECIFICATIONS CONTINUED:

## 15R-270-2-XX

PART NUMBER	MIL SPECIFICATION	MIL PART NUMBER	COMMERCIAL ITEM DESCRIPTION (CID) SPECIFICATION	CID PART NUMBER
15R-270-2-05	MIL-T-55155/30	M55155/30XB07 (M55155/30-7Z; SE30XC07Z)	A-A-59126/30	AA59126/30XB07
15R-270-2-088	MIL-T-55155/30	M55155/30XD07	A-A-59126/30	AA59126/30XD07
15R-270-2-095	MIL-T-55155/30	M55155/30XC07	A-A-59126/30	AA59126/30XC07

## 15R-270-3-XX

PART NUMBER	MIL SPECIFICATION	MIL PART NUMBER	COMMERCIAL ITEM DESCRIPTION (CID) SPECIFICATION	CID PART NUMBER
15R-270-3-05	MIL-T-55155/30	M55155/30XB11 (M55155/30-11Z; SE30XC11Z)	A-A-59126/30	AA59126/30XB11
15R-270-3-088	MIL-T-55155/30	M55155/30XD11	A-A-59126/30	AA59126/30XD11
15R-270-3-095	MIL-T-55155/30	M55155/30XC11	A-A-59126/30	AA59126/30XC11

## 15R-270-4-XX

PART NUMBER	MIL SPECIFICATION	MIL PART NUMBER	COMMERCIAL ITEM DESCRIPTION (CID) SPECIFICATION	CID PART NUMBER
15R-270-4-05	MIL-T-55155/30	M55155/30XB15 (M55155/30-15Z; SE30XC15Z)	A-A-59126/30	AA59126/30XB15
15R-270-4-088	MIL-T-55155/30	M55155/30XD15	A-A-59126/30	AA59126/30XD15
15R-270-4-095	MIL-T-55155/30	M55155/30XC15	A-A-59126/30	AA59126/30XC15

## 15R-270-6-XX

PART NUMBER	MIL SPECIFICATION	MIL PART NUMBER	COMMERCIAL ITEM DESCRIPTION (CID) SPECIFICATION	CID PART NUMBER
15R-270-6-05	MIL-T-55155/30	M55155/30XB18 (M55155/30-18Z; SE30XC18Z)	A-A-59126/30	AA59126/30XB18
15R-270-6-088	MIL-T-55155/30	M55155/30XD18	A-A-59126/30	AA59126/30XD18
15R-270-6-095	MIL-T-55155/30	M55155/30XC18	A-A-59126/30	AA59126/30XC18

## 15R-270-8-XX

PART NUMBER	MIL SPECIFICATION	MIL PART NUMBER	COMMERCIAL ITEM DESCRIPTION (CID) SPECIFICATION	CID PART NUMBER
15R-270-8-05	MIL-T-55155/30	M55155/30XB21 (M55155/30-21Z; SE30XC21Z)	A-A-59126/30	AA59126/30XB21
15R-270-8-088	MIL-T-55155/30	M55155/30XD21	A-A-59126/30	AA59126/30XD21
15R-270-8-095	MIL-T-55155/30	M55155/30XC21	A-A-59126/30	AA59126/30XC21

TOOLING:

INSTALLATION TOOL: ARBOR PRESS	INSTALLATION TOOL: ANVIL (ARBOR PRESS OPERATED)	INSTALLATION TOOL: PRESS-FIT / ROLL SWAGE / RIVET PUNCH (ARBOR PRESS OPERATED)	INSTALLATION TOOL: FLARE SWAGE PUNCH (ARBOR PRESS OPERATED)
TM1	TA188-146-31	TP112-78	TFLP90-200

NOTES:

DATASHEET NOTES
-----------------

N/A

INSTRUCTION NOTES
-------------------

SEE GENERAL SWAGING INSTALLATION INSTRUCTION ON CONCORD ELECTRONICS' WEBSITE [WWW.CONCORD-ELECTRONICS.COM](http://WWW.CONCORD-ELECTRONICS.COM)