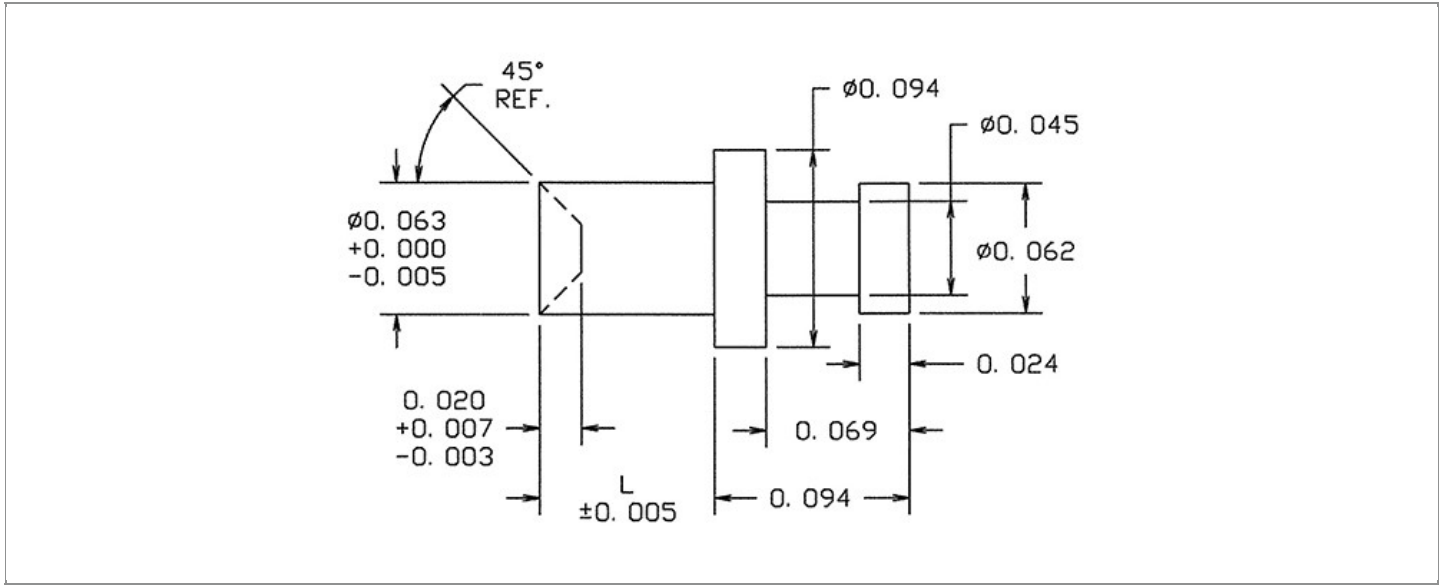


DRAWING NUMBER:	15R-141-X-XX
PRODUCT GROUP:	TERMINALS
SUB-GROUP:	MILITARY NON-INSULATED TERMINALS
DESCRIPTION:	NON-INSULATED TURRET TERMINAL



BOARD / PANEL MOUNTING METHOD	MOUNTING HOLE SIZE	DRILL SIZE	FEED THRU COMBINATION
SWAGE MOUNT	0.067" ± 0.001	#51	N/A

PART NO. STRUCTURE:

15R-141 - X - XX
 PART SERIES DIMENSION FINISH

MATERIAL OPTIONS:

15R-141-X-XX

COMPONENT	MATERIAL	MATERIAL AND SPECIFICATION
TERMINAL	PHOSPHOR BRONZE	PHOSPHOR BRONZE PER ASTM B139, ALLOY C54400

DIMENSION OPTIONS:

15R-141-X-XX

DIMENSION	K	OVERALL LENGTH	SHANK LENGTH (L)	BOARD/PANEL THICKNESS
1	N/A	0.147"	0.053"	1/32"
2	N/A	0.178"	0.084"	1/16"
3	N/A	0.209"	0.115"	3/32"
4	N/A	0.241"	0.147"	1/8"

FINISH - PLATING OPTIONS:

15R-141-X-**XX**

FINISH CODE	COMPONENT	FINISH	FINISH AND SPECIFICATION
05	TERMINAL	ELECTRO-SOLDER	0.000300"MIN. ELECTRO-SOLDER PER SAE-AMS-P-81728 OVER 0.000100"MIN. COPPER PER SAE-AMS-2418
088	TERMINAL	BRIGHT TIN-LEAD	0.000300"MIN. BRIGHT TIN-LEAD (Sn93%-Pb7%) PER ASTM B545 OVER 0.000100"MIN. COPPER PER SAE-AMS-2418
095	TERMINAL	HOT SOLDER DIP	0.000100"MIN. HOT SOLDER DIP USING Sn60 PER IPC-J-STD-006 OVER 0.000100"MIN. COPPER PER SAE-AMS-2418

TOLERANCES:*

DECIMAL	FRACTIONAL	ANGULAR	DRAWING ORIGATION DATE	LAST MODIFICATION DATE
± 0.005	N/A	± 3 °	4/16/1997	3/1/2017

*All dimensions are in inches.

RoHS COMPLIANCE:

15R-141-1-XX

PART NUMBER	RoHS COMPLIANT
15R-141-1-05	NO
15R-141-1-088	NO
15R-141-1-095	NO

15R-141-2-XX

PART NUMBER	RoHS COMPLIANT
15R-141-2-05	NO
15R-141-2-088	NO
15R-141-2-095	NO

15R-141-3-XX

PART NUMBER	RoHS COMPLIANT
15R-141-3-05	NO
15R-141-3-088	NO
15R-141-3-095	NO

15R-141-4-XX

PART NUMBER	RoHS COMPLIANT
15R-141-4-05	NO
15R-141-4-088	NO
15R-141-4-095	NO

MILITARY REFERENCE SPECIFICATIONS:

15R-141-1-XX

PART NUMBER	MIL SPECIFICATION	MIL PART NUMBER	COMMERCIAL ITEM DESCRIPTION (CID) SPECIFICATION	CID PART NUMBER
15R-141-1-05	MIL-T-55155/11	M55155/11XB04 (M55155/11-4Z; SE11XC04Z)	A-A-59126/11	AA59126/11XB04
15R-141-1-088	MIL-T-55155/11	M55155/11XD04	A-A-59126/11	AA59126/11XD04
15R-141-1-095	MIL-T-55155/11	M55155/11XC04	A-A-59126/11	AA59126/11XC04

Continued on next page...

MILITARY REFERENCE SPECIFICATIONS CONTINUED:

15R-141-2-XX

PART NUMBER	MIL SPECIFICATION	MIL PART NUMBER	COMMERCIAL ITEM DESCRIPTION (CID) SPECIFICATION	CID PART NUMBER
15R-141-2-05	MIL-T-55155/11	M55155/11XB05 (M55155/11-5Z; SE11XC05Z)	A-A-59126/11	AA59126/11XB05
15R-141-2-088	MIL-T-55155/11	M55155/11XD05	A-A-59126/11	AA59126/11XD05
15R-141-2-095	MIL-T-55155/11	M55155/11XC05	A-A-59126/11	AA59126/11XC05

15R-141-3-XX

PART NUMBER	MIL SPECIFICATION	MIL PART NUMBER	COMMERCIAL ITEM DESCRIPTION (CID) SPECIFICATION	CID PART NUMBER
15R-141-3-05	MIL-T-55155/11	M55155/11XB06 (M55155/11-6Z; SE11XC06Z)	A-A-59126/11	AA59126/11XB06
15R-141-3-088	MIL-T-55155/11	M55155/11XD06	A-A-59126/11	AA59126/11XD06
15R-141-3-095	MIL-T-55155/11	M55155/11XC06	A-A-59126/11	AA59126/11XC06

15R-141-4-XX

PART NUMBER	MIL SPECIFICATION	MIL PART NUMBER	COMMERCIAL ITEM DESCRIPTION (CID) SPECIFICATION	CID PART NUMBER
15R-141-4-05	MIL-T-55155/11	M55155/11XB07 (M55155/11-7Z; SE11XC07Z)	A-A-59126/11	AA59126/11XB07
15R-141-4-088	MIL-T-55155/11	M55155/11XD07	A-A-59126/11	AA59126/11XD07
15R-141-4-095	MIL-T-55155/11	M55155/11XC07	A-A-59126/11	AA59126/11XC07

TOOLING:

INSTALLATION TOOL: ARBOR PRESS	INSTALLATION TOOL: ANVIL (ARBOR PRESS OPERATED)	INSTALLATION TOOL: PRESS-FIT / ROLL SWAGE / RIVET PUNCH (ARBOR PRESS OPERATED)	INSTALLATION TOOL: FLARE SWAGE PUNCH (ARBOR PRESS OPERATED)
TM1	TA94-62-20	TP10-141	N/A

NOTES:

DATASHEET NOTES
N/A
INSTRUCTION NOTES
SEE GENERAL SWAGING INSTALLATION INSTRUCTION ON CONCORD ELECTRONICS' WEBSITE WWW.CONCORD-ELECTRONICS.COM