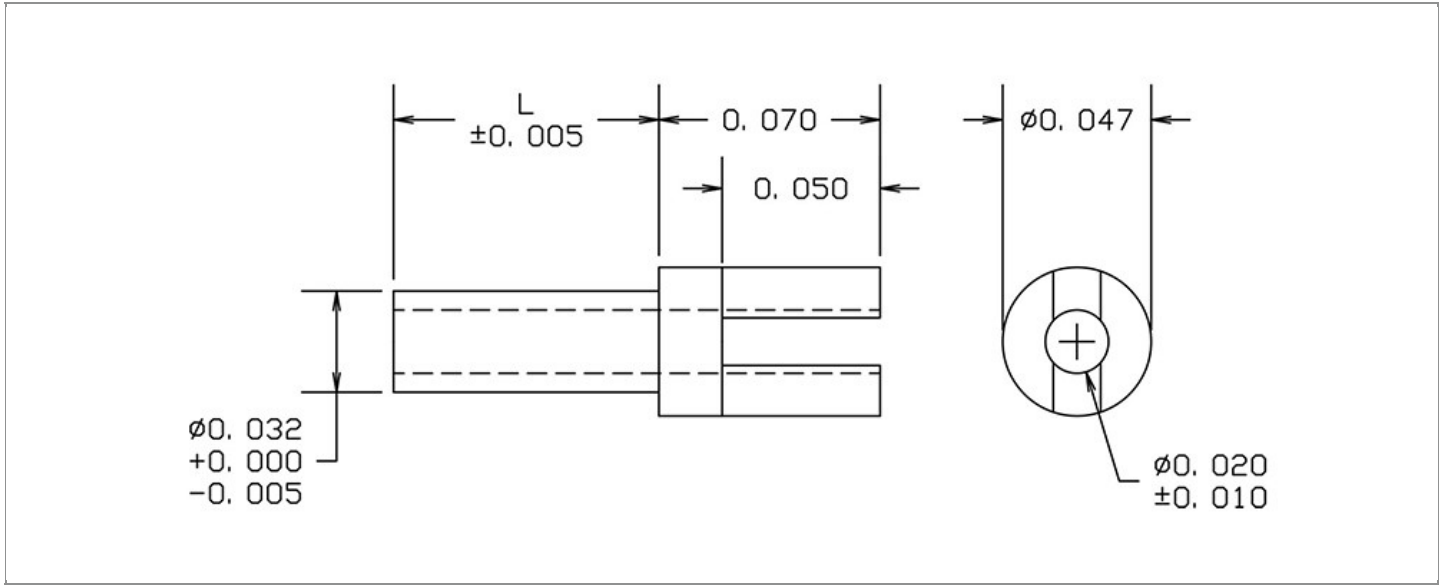


<b>DRAWING NUMBER:</b>	<b>15-499-X-XX</b>
<b>PRODUCT GROUP:</b>	TERMINALS
<b>SUB-GROUP:</b>	MILITARY NON-INSULATED TERMINALS
<b>DESCRIPTION:</b>	NON-INSULATED THRU-HOLE SLOTTED TERMINAL



BOARD / PANEL MOUNTING METHOD	MOUNTING HOLE SIZE	DRILL SIZE	FEED THRU COMBINATION
SWAGE MOUNT	0.033" $\pm$ 0.001	#66	N/A

**PART NO. STRUCTURE:**

15-499	-	X	-	XX
PART SERIES		DIMENSION		FINISH

**MATERIAL OPTIONS:**

15-499-X-XX

COMPONENT	MATERIAL	MATERIAL AND SPECIFICATION
TERMINAL	BRASS	BRASS PER ASTM B16, ALLOY C36000, 1/2 HARD

**DIMENSION OPTIONS:**

15-499-X-XX

DIMENSION	K	OVERALL LENGTH	SHANK LENGTH (L)	BOARD/PANEL THICKNESS
1	N/A	0.123"	0.053"	1/32"
2	N/A	0.154"	0.084"	1/16"
3	N/A	0.185"	0.115"	3/32"

FINISH - PLATING OPTIONS:

15-499-X-**XX**

FINISH CODE	COMPONENT	FINISH	FINISH AND SPECIFICATION
05	TERMINAL	ELECTRO-SOLDER	0.000300"MIN. ELECTRO-SOLDER PER SAE-AMS-P-81728 OVER 0.000100"MIN. COPPER PER SAE-AMS-2418
088	TERMINAL	BRIGHT TIN-LEAD	0.000300"MIN. BRIGHT TIN-LEAD (Sn93%-Pb7%) PER ASTM B545 OVER 0.000100"MIN. COPPER PER SAE-AMS-2418
095	TERMINAL	HOT SOLDER DIP	0.000100"MIN. HOT SOLDER DIP USING Sn60 PER IPC-J-STD-006 OVER 0.000100"MIN. COPPER PER SAE-AMS-2418

TOLERANCES:\*

DECIMAL	FRACTIONAL	ANGULAR	DRAWING ORIGATION DATE	LAST MODIFICATION DATE
± 0.010	N/A	N/A	10/28/2002	3/1/2017

\*All dimensions are in inches.

RoHS COMPLIANCE:

15-499-1-XX

PART NUMBER	RoHS COMPLIANT
15-499-1-05	NO
15-499-1-088	NO
15-499-1-095	NO

15-499-2-XX

PART NUMBER	RoHS COMPLIANT
15-499-2-05	NO
15-499-2-088	NO
15-499-2-095	NO

15-499-3-XX

PART NUMBER	RoHS COMPLIANT
15-499-3-05	NO
15-499-3-088	NO
15-499-3-095	NO

MILITARY REFERENCE SPECIFICATIONS:

15-499-1-XX

PART NUMBER	MIL SPECIFICATION	MIL PART NUMBER	COMMERCIAL ITEM DESCRIPTION (CID) SPECIFICATION	CID PART NUMBER
15-499-1-05	MIL-T-55155/24	M55155/24XH15 (M55155/24-15S; SE24XC15S)	A-A-59126/24	AA59126/24XH15
15-499-1-088	MIL-T-55155/24	M55155/24XJ15	A-A-59126/24	AA59126/24XJ15 (AA59126/2415)
15-499-1-095	MIL-T-55155/24	M55155/24XI15	A-A-59126/24	AA59126/24XI15

15-499-2-XX

PART NUMBER	MIL SPECIFICATION	MIL PART NUMBER	COMMERCIAL ITEM DESCRIPTION (CID) SPECIFICATION	CID PART NUMBER
15-499-2-05	MIL-T-55155/24	M55155/24XH16 (M55155/24-16S; SE24XC16S)	A-A-59126/24	AA59126/24XH16
15-499-2-088	MIL-T-55155/24	M55155/24XJ16	A-A-59126/24	AA59126/24XJ16 (AA59126/2416)
15-499-2-095	MIL-T-55155/24	M55155/24XI16	A-A-59126/24	AA59126/24XI16

Continued on next page...

MILITARY REFERENCE SPECIFICATIONS CONTINUED:

15-499-3-XX

PART NUMBER	MIL SPECIFICATION	MIL PART NUMBER	COMMERCIAL ITEM DESCRIPTION (CID) SPECIFICATION	CID PART NUMBER
15-499-3-05	MIL-T-55155/24	M55155/24XH17 (M55155/24-17S; SE24XC17S)	A-A-59126/24	AA59126/24XH17
15-499-3-088	MIL-T-55155/24	M55155/24XJ17	A-A-59126/24	AA59126/24XJ17 (AA59126/2417)
15-499-3-095	MIL-T-55155/24	M55155/24XI17	A-A-59126/24	AA59126/24XI17

TOOLING:

INSTALLATION TOOL: ARBOR PRESS	INSTALLATION TOOL: ANVIL (ARBOR PRESS OPERATED)	INSTALLATION TOOL: PRESS-FIT / ROLL SWAGE / RIVET PUNCH (ARBOR PRESS OPERATED)	INSTALLATION TOOL: FLARE SWAGE PUNCH (ARBOR PRESS OPERATED)
TM1	TA10-499	TP30-20	TFLP90-150

NOTES:

DATASHEET NOTES
N/A

INSTRUCTION NOTES
SEE GENERAL SWAGING INSTALLATION INSTRUCTION ON CONCORD ELECTRONICS' WEBSITE <a href="http://WWW.CONCORD-ELECTRONICS.COM">WWW.CONCORD-ELECTRONICS.COM</a>