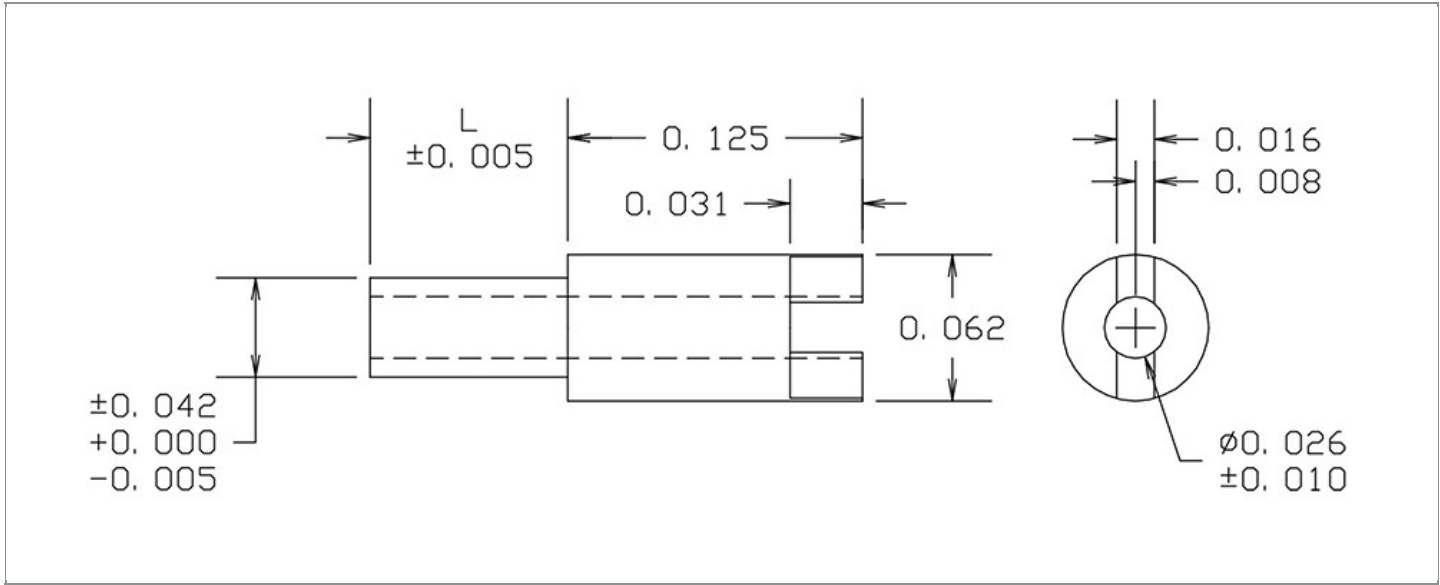


DRAWING NUMBER:	15-494-X-XX
PRODUCT GROUP:	TERMINALS
SUB-GROUP:	MILITARY NON-INSULATED TERMINALS
DESCRIPTION:	NON-INSULATED THRU-HOLE SLOTTED TERMINAL



BOARD / PANEL MOUNTING METHOD	MOUNTING HOLE SIZE	DRILL SIZE	FEED THRU COMBINATION
SWAGE MOUNT	$0.043" \pm 0.001$	#57	N/A

PART NO. STRUCTURE:

15-494	-	X	-	XX
PART SERIES		DIMENSION		FINISH

MATERIAL OPTIONS:

15-494-X-XX

COMPONENT	MATERIAL	MATERIAL AND SPECIFICATION
TERMINAL	BRASS	BRASS PER ASTM B16, ALLOY C36000, 1/2 HARD

DIMENSION OPTIONS:

15-494-X-XX

DIMENSION	K	OVERALL LENGTH	SHANK LENGTH (L)	BOARD/PANEL THICKNESS
1	N/A	0.178"	0.053"	1/32"
2	N/A	0.209"	0.084"	1/16"
3	N/A	0.240"	0.115"	3/32"
4	N/A	0.272"	0.147"	1/8"
11	N/A	0.162"	0.037"	1/64"

FINISH - PLATING OPTIONS:

15-494-X-**XX**

FINISH CODE	COMPONENT	FINISH	FINISH AND SPECIFICATION
05	TERMINAL	ELECTRO-SOLDER	0.000300"MIN. ELECTRO-SOLDER PER SAE-AMS-P-81728 OVER 0.000100"MIN. COPPER PER SAE-AMS-2418
088	TERMINAL	BRIGHT TIN-LEAD	0.000300"MIN. BRIGHT TIN-LEAD (Sn93%-Pb7%) PER ASTM B545 OVER 0.000100"MIN. COPPER PER SAE-AMS-2418
095	TERMINAL	HOT SOLDER DIP	0.000100"MIN. HOT SOLDER DIP USING Sn60 PER IPC-J-STD-006 OVER 0.000100"MIN. COPPER PER SAE-AMS-2418

TOLERANCES:*

DECIMAL	FRACTIONAL	ANGULAR	DRAWING ORIGATION DATE	LAST MODIFICATION DATE
± 0.010	N/A	N/A	4/29/1998	3/1/2017

*All dimensions are in inches.

RoHS COMPLIANCE:

15-494-1-XX

PART NUMBER	RoHS COMPLIANT
15-494-1-05	NO
15-494-1-088	NO
15-494-1-095	NO

15-494-2-XX

PART NUMBER	RoHS COMPLIANT
15-494-2-05	NO
15-494-2-088	NO
15-494-2-095	NO

15-494-3-XX

PART NUMBER	RoHS COMPLIANT
15-494-3-05	NO
15-494-3-088	NO
15-494-3-095	NO

15-494-4-XX

PART NUMBER	RoHS COMPLIANT
15-494-4-05	NO
15-494-4-088	NO
15-494-4-095	NO

15-494-11-XX

PART NUMBER	RoHS COMPLIANT
15-494-11-05	NO
15-494-11-088	NO
15-494-11-095	NO

MILITARY REFERENCE SPECIFICATIONS:

15-494-1-XX

PART NUMBER	MIL SPECIFICATION	MIL PART NUMBER	COMMERCIAL ITEM DESCRIPTION (CID) SPECIFICATION	CID PART NUMBER
15-494-1-05	MIL-T-55155/24	M55155/24XH11 (M55155/24-11S; SE24XC11S)	A-A-59126/24	AA59126/24XH11
15-494-1-088	MIL-T-55155/24	M55155/24XJ11	A-A-59126/24	AA59126/24XJ11 (AA59126/2411)
15-494-1-095	MIL-T-55155/24	M55155/24XI11	A-A-59126/24	AA59126/24XI11

Continued on next page...

MILITARY REFERENCE SPECIFICATIONS CONTINUED:

15-494-2-XX

PART NUMBER	MIL SPECIFICATION	MIL PART NUMBER	COMMERCIAL ITEM DESCRIPTION (CID) SPECIFICATION	CID PART NUMBER
15-494-2-05	MIL-T-55155/24	M55155/24XH12 (M55155/24-12S; SE24XC12S)	A-A-59126/24	AA59126/24XH12
15-494-2-088	MIL-T-55155/24	M55155/24XJ12	A-A-59126/24	AA59126/24XJ12 (AA59126/2412)
15-494-2-095	MIL-T-55155/24	M55155/24XI12	A-A-59126/24	AA59126/24XI12

15-494-3-XX

PART NUMBER	MIL SPECIFICATION	MIL PART NUMBER	COMMERCIAL ITEM DESCRIPTION (CID) SPECIFICATION	CID PART NUMBER
15-494-3-05	MIL-T-55155/24	M55155/24XH13 (M55155/24-13S; SE24XC13S)	A-A-59126/24	AA59126/24XH13
15-494-3-088	MIL-T-55155/24	M55155/24XJ13	A-A-59126/24	AA59126/24XJ13 (AA59126/2413)
15-494-3-095	MIL-T-55155/24	M55155/24XI13	A-A-59126/24	AA59126/24XI13

15-494-4-XX

PART NUMBER	MIL SPECIFICATION	MIL PART NUMBER	COMMERCIAL ITEM DESCRIPTION (CID) SPECIFICATION	CID PART NUMBER
15-494-4-05	MIL-T-55155/24	M55155/24XH14 (M55155/24-14S; SE24XC14S)	A-A-59126/24	AA59126/24XH14
15-494-4-088	MIL-T-55155/24	M55155/24XJ14	A-A-59126/24	AA59126/24XJ14 (AA59126/2414)
15-494-4-095	MIL-T-55155/24	M55155/24XI14	A-A-59126/24	AA59126/24XI14

15-494-11-XX

PART NUMBER	MIL SPECIFICATION	MIL PART NUMBER	COMMERCIAL ITEM DESCRIPTION (CID) SPECIFICATION	CID PART NUMBER
15-494-11-05	MIL-T-55155/24	M55155/24XH10 (M55155/24-10S; SE24XC10S)	A-A-59126/24	AA59126/24XH10
15-494-11-088	MIL-T-55155/24	M55155/24XJ10	A-A-59126/24	AA59126/24XJ10 (AA59126/2410)
15-494-11-095	MIL-T-55155/24	M55155/24XI10	A-A-59126/24	AA59126/24XI10

TOOLING:

INSTALLATION TOOL: ARBOR PRESS	INSTALLATION TOOL: ANVIL (ARBOR PRESS OPERATED)	INSTALLATION TOOL: PRESS-FIT / ROLL SWAGE / RIVET PUNCH (ARBOR PRESS OPERATED)	INSTALLATION TOOL: FLARE SWAGE PUNCH (ARBOR PRESS OPERATED)
TM1	TA10-494	TP42-26	TFLP90-150

NOTES:

DATASHEET NOTES

N/A

INSTRUCTION NOTES

SEE GENERAL SWAGING INSTALLATION INSTRUCTION ON CONCORD ELECTRONICS' WEBSITE WWW.CONCORD-ELECTRONICS.COM
