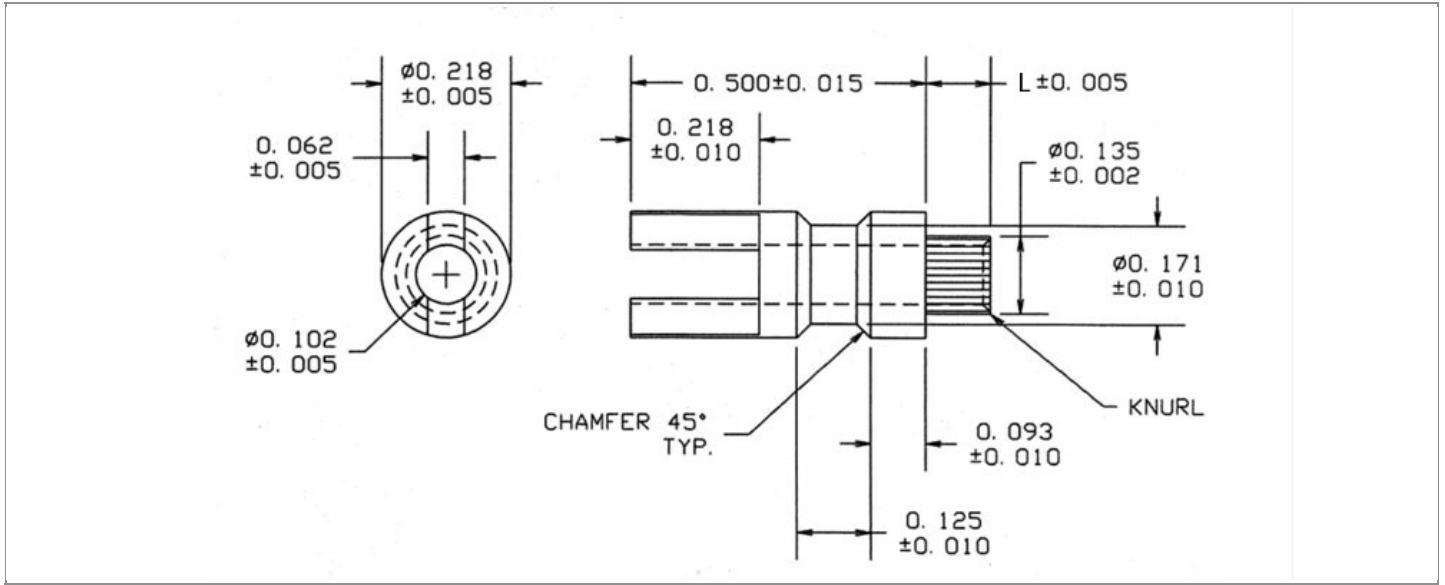


DRAWING NUMBER:	15-407-X-XX
PRODUCT GROUP:	TERMINALS
SUB-GROUP:	MILITARY NON-INSULATED TERMINALS
DESCRIPTION:	NON-INSULATED THRU-HOLE KNURLED SLOTTED TERMINAL



BOARD / PANEL MOUNTING METHOD	MOUNTING HOLE SIZE	DRILL SIZE	FEED THRU COMBINATION
SWAGE MOUNT	0.140" ± 0.001	#28	N/A

PART NO. STRUCTURE:

15-407	-	X	-	XX
PART SERIES		DIMENSION		FINISH

MATERIAL OPTIONS:

15-407-X-XX

COMPONENT	MATERIAL	MATERIAL AND SPECIFICATION
TERMINAL	BRASS	BRASS PER ASTM B16, ALLOY C36000, 1/2 HARD

DIMENSION OPTIONS:

15-407-X-XX

DIMENSION	K	OVERALL LENGTH	SHANK LENGTH (L)	BOARD/PANEL THICKNESS
2	N/A	0.609"	0.109"	1/16"
3	N/A	0.641"	0.140"	3/32"
4	N/A	0.672"	0.171"	1/8"

FINISH - PLATING OPTIONS:

15-407-X-XX

FINISH CODE	COMPONENT	FINISH	FINISH AND SPECIFICATION
05	TERMINAL	ELECTRO-SOLDER	0.000300"MIN. ELECTRO-SOLDER PER SAE-AMS-P-81728 OVER 0.000100"MIN. COPPER PER SAE-AMS-2418
088	TERMINAL	BRIGHT TIN-LEAD	0.000300"MIN. BRIGHT TIN-LEAD (Sn93%-Pb7%) PER ASTM B545 OVER 0.000100"MIN. COPPER PER SAE-AMS-2418
095	TERMINAL	HOT SOLDER DIP	0.000100"MIN. HOT SOLDER DIP USING Sn60 PER IPC-J-STD-006 OVER 0.000100"MIN. COPPER PER SAE-AMS-2418

TOLERANCES:*

DECIMAL	FRACTIONAL	ANGULAR	DRAWING ORIGATION DATE	LAST MODIFICATION DATE
N/A	N/A	N/A	7/25/1998	3/1/2017

*All dimensions are in inches.

RoHS COMPLIANCE:

15-407-2-XX

PART NUMBER	RoHS COMPLIANT
15-407-2-05	NO
15-407-2-088	NO
15-407-2-095	NO

15-407-3-XX

PART NUMBER	RoHS COMPLIANT
15-407-3-05	NO
15-407-3-088	NO
15-407-3-095	NO

15-407-4-XX

PART NUMBER	RoHS COMPLIANT
15-407-4-05	NO
15-407-4-088	NO
15-407-4-095	NO

MILITARY REFERENCE SPECIFICATIONS:

15-407-2-XX

PART NUMBER	MIL SPECIFICATION	MIL PART NUMBER	COMMERCIAL ITEM DESCRIPTION (CID) SPECIFICATION	CID PART NUMBER
15-407-2-05	MIL-T-55155/32	M55155/32XH02 (M55155/32-2S; SE32XC02S)	A-A-59126/32	AA59126/32XH02
15-407-2-088	MIL-T-55155/32	M55155/32XJ02	A-A-59126/32	AA59126/32XJ02 (AA59126/3202)
15-407-2-095	MIL-T-55155/32	M55155/32XI02	A-A-59126/32	AA59126/32XI02

15-407-3-XX

PART NUMBER	MIL SPECIFICATION	MIL PART NUMBER	COMMERCIAL ITEM DESCRIPTION (CID) SPECIFICATION	CID PART NUMBER
15-407-3-05	MIL-T-55155/32	M55155/32XH04 (M55155/32-4S; SE32XC04S)	A-A-59126/32	AA59126/32XH04
15-407-3-088	MIL-T-55155/32	M55155/32XJ04	A-A-59126/32	AA59126/32XJ04 (AA59126/3204)
15-407-3-095	MIL-T-55155/32	M55155/32XI04	A-A-59126/32	AA59126/32XI04

Continued on next page...

MILITARY REFERENCE SPECIFICATIONS CONTINUED:

15-407-4-XX

PART NUMBER	MIL SPECIFICATION	MIL PART NUMBER	COMMERCIAL ITEM DESCRIPTION (CID) SPECIFICATION	CID PART NUMBER
15-407-4-05	MIL-T-55155/32	M55155/32XH07 (M55155/32-7S; SE32XC07S)	A-A-59126/32	AA59126/32XH07
15-407-4-088	MIL-T-55155/32	M55155/32XJ07	A-A-59126/32	AA59126/32XJ07 (AA59126/3207)
15-407-4-095	MIL-T-55155/32	M55155/32XI07	A-A-59126/32	AA59126/32XI07

TOOLING:

INSTALLATION TOOL: ARBOR PRESS	INSTALLATION TOOL: ANVIL (ARBOR PRESS OPERATED)	INSTALLATION TOOL: PRESS-FIT / ROLL SWAGE / RIVET PUNCH (ARBOR PRESS OPERATED)	INSTALLATION TOOL: FLARE SWAGE PUNCH (ARBOR PRESS OPERATED)
TM1	TA10-407	TP135-102	TFLP90-200

NOTES:

DATASHEET NOTES

N/A

INSTRUCTION NOTES

SEE GENERAL SWAGING INSTALLATION INSTRUCTION ON CONCORD ELECTRONICS' WEBSITE WWW.CONCORD-ELECTRONICS.COM