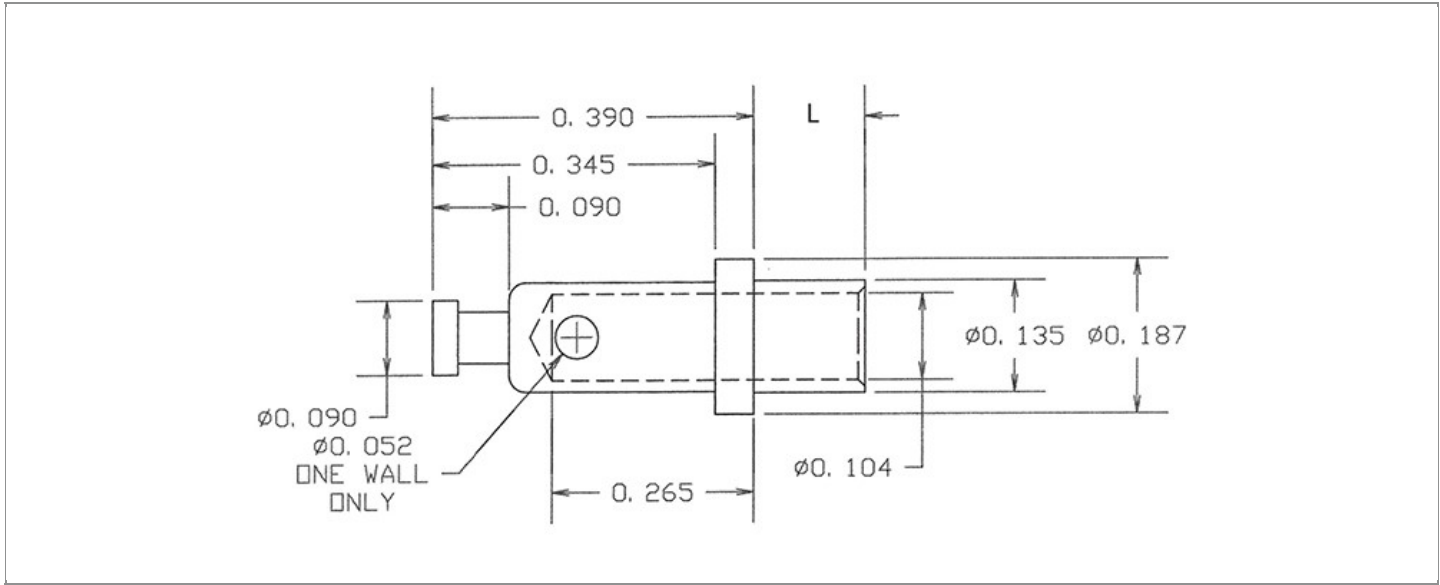


<b>DRAWING NUMBER:</b>	<b>01-2515-X-XX</b>
<b>PRODUCT GROUP:</b>	BANANA PLUGS, JACKS AND PHONE TIPS
<b>SUB-GROUP:</b>	NON-INSULATED BANANA JACKS
<b>DESCRIPTION:</b>	NON-INSULATED MINIATURE BANANA PANEL JACK



ACCEPTS PIN / PLUG / JACK SIZE	BOARD / PANEL MOUNTING METHOD	MOUNTING HOLE SIZE	DRILL SIZE
MINIATURE BANANA PLUG	SWAGE MOUNT	0.1405"	#28

**PART NO. STRUCTURE:**

<b>01-2515</b>	-	<b>X</b>	-	<b>XX</b>
PART SERIES		DIMENSION		FINISH

**MATERIAL OPTIONS:**

**01-2515-X-XX**

COMPONENT	MATERIAL	MATERIAL AND SPECIFICATION
BODY	BRASS	BRASS PER ASTM B16, ALLOY C36000, 1/2 HARD
NUT	N/A	N/A
LUG	N/A	N/A

**DIMENSION OPTIONS:**

**01-2515-X-XX**

DIMENSION	OVERALL LENGTH	MIN. HOLE DEPTH	SHANK LENGTH (L)	BOARD/PANEL THICKNESS
2	0.495"	0.327"	0.105"	1/16"
3	0.525"	0.358"	0.135"	3/32"
4	0.555"	0.390"	0.165"	1/8"

FINISH - PLATING OPTIONS:

01-2515-X-**XX**

FINISH CODE	COMPONENT	FINISH	FINISH AND SPECIFICATION
02	BODY	NICKEL	0.000100"MIN. NICKEL PER SAE-AMS-QQ-N-290
	NUT	N/A	N/A
	LUG	N/A	N/A
03	BODY	GOLD	0.000010"MIN. GOLD PER ASTM B488, TYPE II, CODE C OVER 0.000050"MIN. NICKEL PER SAE-AMS-QQ-N-290
	NUT	N/A	N/A
	LUG	N/A	N/A
044	BODY	BRIGHT ELECTRO-TIN	0.000300"MIN. BRIGHT ELECTRO-TIN PER ASTM B545 OVER 0.000100"MIN. COPPER PER SAE-AMS-2418
	NUT	N/A	N/A
	LUG	N/A	N/A

TOLERANCES:\*

DECIMAL	FRACTIONAL	ANGULAR	DRAWING ORIGATION DATE	LAST MODIFICATION DATE
± 0.010	± 1/64	± 5°	5/15/1998	4/1/2017

\*All dimensions are in inches.

RoHS COMPLIANCE:

01-2515-2-XX

PART NUMBER	RoHS COMPLIANT
01-2515-2-02	YES
01-2515-2-03	YES
01-2515-2-044	YES

01-2515-3-XX

PART NUMBER	RoHS COMPLIANT
01-2515-3-02	YES
01-2515-3-03	YES
01-2515-3-044	YES

01-2515-4-XX

PART NUMBER	RoHS COMPLIANT
01-2515-4-02	YES
01-2515-4-03	YES
01-2515-4-044	YES

TOOLING:

INSTALLATION TOOL: ARBOR PRESS	INSTALLATION TOOL: ANVIL (ARBOR PRESS OPERATED)	INSTALLATION TOOL: PRESS-FIT / ROLL SWAGE / RIVET PUNCH (ARBOR PRESS OPERATED)
TM1	TA187-135-45	TP135-104

**NOTES:**

---

**DATASHEET NOTES**

RATED FOR 15 AMPERES CONTINUOUS DUTY. ACCEPTS MINIATURE BANANA PLUG. HEAT TREATED TO FACILITATE SWAGING. LISTED MINIMUM HOLE DEPTH AFTER SWAGE INSTALLATION.

---

**INSTRUCTION NOTES**

SEE GENERAL SWAGING INSTALLATION INSTRUCTION ON CONCORD ELECTRONICS' WEBSITE [WWW.CONCORD-ELECTRONICS.COM](http://WWW.CONCORD-ELECTRONICS.COM).

---