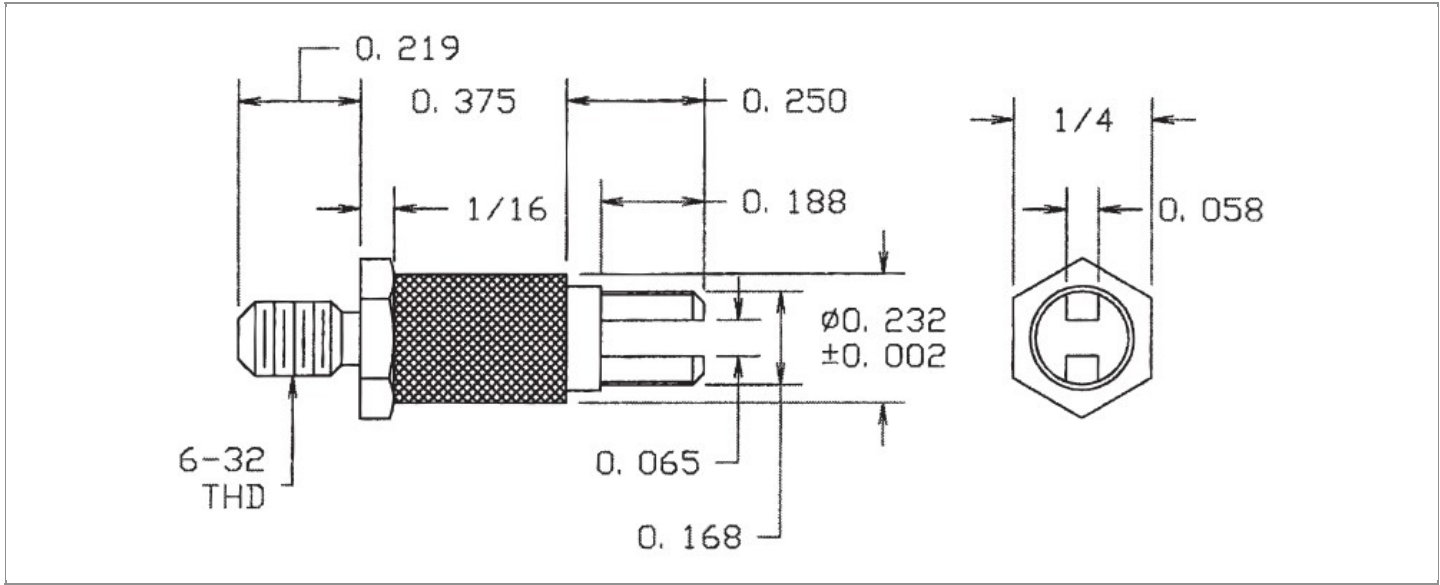


|                        |  |
|------------------------|--|
| <b>DRAWING NUMBER:</b> | 1127-71-XXXX                                 |
| <b>PRODUCT GROUP:</b>  | TERMINALS                                    |
| <b>SUB-GROUP:</b>      | COMMERCIAL INSULATED TERMINALS               |
| <b>DESCRIPTION:</b>    | DIALLYL PHTHALATE INSULATED SLOTTED TERMINAL |



| OVERALL LENGTH   | PIN DIAMETER            | FEED THRU COMBINATION | BOARD / PANEL MOUNTING METHOD |
|------------------|-------------------------|-----------------------|-------------------------------|
| 0.844"           | N/A                     | N/A                   | THREAD MOUNT (6-32 NUT)       |
| SHANK LENGTH (L) | BOARD / PANEL THICKNESS | MOUNTING HOLE SIZE    | DRILL SIZE                    |
| N/A              | UP TO 3/32"             | 0.144" ± 0.002        | #27                           |

**PART NO. STRUCTURE:**

|             |   |           |   |        |                  |
|-------------|---|-----------|---|--------|------------------|
| 1127        | - | 71        | - | XX     | XX               |
| PART SERIES |   | DIMENSION |   | FINISH | INSULATION COLOR |

**MATERIAL OPTIONS:**

**1127-71-XXXX**

| COMPONENT         | MATERIAL          | MATERIAL AND SPECIFICATION                          |
|-------------------|-------------------|---|
| TERMINAL          | BRASS             | BRASS PER ASTM B16, ALLOY C36000, 1/2 HARD          |
| BASE/METAL SLEEVE | BRASS             | BRASS PER ASTM B16, ALLOY C36000, 1/2 HARD          |
| INSULATION*       | DIALLYL PHTHALATE | MOLDED DIALLYL PHTHALATE, TYPE SDG-F PER ASTM D5948 |
| NUT               | N/A               | N/A   |
| WASHER            | N/A               | N/A   |

\*For Insulation color, please see INSULATION COLOR OPTIONS on Page 3

## FINISH - PLATING OPTIONS:

1127-71-XXXX

| FINISH CODE | COMPONENT         | FINISH             | FINISH AND SPECIFICATION  |
|-------------|-------------------|--------------------|---|
| 01          | TERMINAL          | SILVER             | 0.000300"MIN. SILVER PER ASTM B700, TYPE 2, GRADE D WITH A NON-CHROMATE PRESERVATIVE TREATMENT          |
|             | BASE/METAL SLEEVE | ZINC               | 0.000100"MIN. ZINC WITH YELLOW TRIVALENT CHROMATE PER ASTM B633   |
|             | NUT               | N/A                | N/A   |
|             | WASHER            | N/A                | N/A   |
| 03          | TERMINAL          | GOLD               | 0.000010"MIN. GOLD PER ASTM B488, TYPE II, CODE C OVER 0.000100"MIN. NICKEL PER SAE-AMS-QQ-N-290        |
|             | BASE/METAL SLEEVE | ZINC               | 0.000100"MIN. ZINC WITH YELLOW TRIVALENT CHROMATE PER ASTM B633   |
|             | NUT               | N/A                | N/A   |
|             | WASHER            | N/A                | N/A   |
| 04          | TERMINAL          | ELECTRO-TIN        | 0.000300"MIN. ELECTRO-TIN PER ASTM B545 OVER 0.000100"MIN. NICKEL PER SAE-AMS-QQ-N-290                  |
|             | BASE/METAL SLEEVE | ZINC               | 0.000100"MIN. ZINC WITH YELLOW TRIVALENT CHROMATE PER ASTM B633   |
|             | NUT               | N/A                | N/A   |
|             | WASHER            | N/A                | N/A   |
| 044         | TERMINAL          | BRIGHT ELECTRO-TIN | 0.000300"MIN. BRIGHT ELECTRO-TIN PER ASTM B545 OVER 0.000100"MIN. NICKEL PER SAE-AMS-QQ-N-290           |
|             | BASE/METAL SLEEVE | ZINC               | 0.000100"MIN. ZINC WITH YELLOW TRIVALENT CHROMATE PER ASTM B633   |
|             | NUT               | N/A                | N/A   |
|             | WASHER            | N/A                | N/A   |
| 05          | TERMINAL          | ELECTRO-SOLDER     | 0.000300"MIN. ELECTRO-SOLDER PER SAE-AMS-P-81728 OVER 0.000100"MIN. NICKEL PER SAE-AMS-QQ-N-290         |
|             | BASE/METAL SLEEVE | ZINC               | 0.000100"MIN. ZINC WITH YELLOW TRIVALENT CHROMATE PER ASTM B633   |
|             | NUT               | N/A                | N/A   |
|             | WASHER            | N/A                | N/A   |
| 088         | TERMINAL          | BRIGHT TIN-LEAD    | 0.000300"MIN. BRIGHT TIN-LEAD (Sn93%-Pb7%) PER ASTM B545 OVER 0.000100"MIN. NICKEL PER SAE-AMS-QQ-N-290 |
|             | BASE/METAL SLEEVE | ZINC               | 0.000100"MIN. ZINC WITH YELLOW TRIVALENT CHROMATE PER ASTM B633   |
|             | NUT               | N/A                | N/A   |
|             | WASHER            | N/A                | N/A   |

INSULATION COLOR OPTIONS:

1127-71-XX **XX**

| INSULATION COLOR | BLACK | BLUE | BROWN | GRAY | GREEN | ORANGE | RED | VIOLET | WHITE | YELLOW |
|------------------|-------|------|-------|------|-------|--------|-----|--------|-------|--------|
| COLOR CODE NO.   | 10    | 16   | 11    | 18   | 15    | 13     | 12  | 17     | 19    | 14     |

TOLERANCES:\*

| DECIMAL | FRACTIONAL | ANGULAR | DRAWING ORIGATION DATE | LAST MODIFICATION DATE |
|---------|------------|---------|------------------------|------------------------|
| ± 0.005 | ± 1/64     | ± 5 °   | 9/16/1999              | 3/1/2017               |

\*All dimensions are in inches.

RoHS COMPLIANCE:

1127-71-01XX

| PART NUMBER  | RoHS COMPLIANT |
|--------------|----------------|
| 1127-71-0110 | YES            |
| 1127-71-0111 | YES            |
| 1127-71-0112 | YES            |
| 1127-71-0113 | YES            |
| 1127-71-0114 | YES            |
| 1127-71-0115 | YES            |
| 1127-71-0116 | YES            |
| 1127-71-0117 | YES            |
| 1127-71-0118 | YES            |
| 1127-71-0119 | YES            |

1127-71-03XX

| PART NUMBER  | RoHS COMPLIANT |
|--------------|----------------|
| 1127-71-0310 | YES            |
| 1127-71-0311 | YES            |
| 1127-71-0312 | YES            |
| 1127-71-0313 | YES            |
| 1127-71-0314 | YES            |
| 1127-71-0315 | YES            |
| 1127-71-0316 | YES            |
| 1127-71-0317 | YES            |
| 1127-71-0318 | YES            |
| 1127-71-0319 | YES            |

1127-71-04XX

| PART NUMBER  | RoHS COMPLIANT |
|--------------|----------------|
| 1127-71-0410 | YES            |
| 1127-71-0411 | YES            |
| 1127-71-0412 | YES            |
| 1127-71-0413 | YES            |
| 1127-71-0414 | YES            |
| 1127-71-0415 | YES            |
| 1127-71-0416 | YES            |
| 1127-71-0417 | YES            |
| 1127-71-0418 | YES            |
| 1127-71-0419 | YES            |

1127-71-044XX

| PART NUMBER   | RoHS COMPLIANT |
|---------------|----------------|
| 1127-71-04410 | YES            |
| 1127-71-04411 | YES            |
| 1127-71-04412 | YES            |
| 1127-71-04413 | YES            |
| 1127-71-04414 | YES            |
| 1127-71-04415 | YES            |
| 1127-71-04416 | YES            |
| 1127-71-04417 | YES            |
| 1127-71-04418 | YES            |
| 1127-71-04419 | YES            |

1127-71-05XX

| PART NUMBER  | RoHS COMPLIANT |
|--------------|----------------|
| 1127-71-0510 | NO             |
| 1127-71-0511 | NO             |
| 1127-71-0512 | NO             |
| 1127-71-0513 | NO             |
| 1127-71-0514 | NO             |
| 1127-71-0515 | NO             |
| 1127-71-0516 | NO             |
| 1127-71-0517 | NO             |
| 1127-71-0518 | NO             |
| 1127-71-0519 | NO             |

1127-71-088XX

| PART NUMBER   | RoHS COMPLIANT |
|---------------|----------------|
| 1127-71-08810 | NO             |
| 1127-71-08811 | NO             |
| 1127-71-08812 | NO             |
| 1127-71-08813 | NO             |
| 1127-71-08814 | NO             |
| 1127-71-08815 | NO             |
| 1127-71-08816 | NO             |
| 1127-71-08817 | NO             |
| 1127-71-08818 | NO             |
| 1127-71-08819 | NO             |

TOOLING:

| INSTALLATION TOOL:<br>ARBOR PRESS | INSTALLATION TOOL:<br>ANVIL<br>(ARBOR PRESS OPERATED) | INSTALLATION TOOL:<br>PRESS-FIT / ROLL SWAGE / RIVET PUNCH<br>(ARBOR PRESS OPERATED) | INSTALLATION TOOL:<br>PRESS-FIT<br>(HAND OPERATED) |
|-----------------------------------|---|--|--|
| N/A                               | N/A   | N/A  | N/A  |

NOTES:

**DATASHEET NOTES**

NUT AND WASHER ARE NOT INCLUDED.

**INSTRUCTION NOTES**

N/A